

Project Update

November 2025

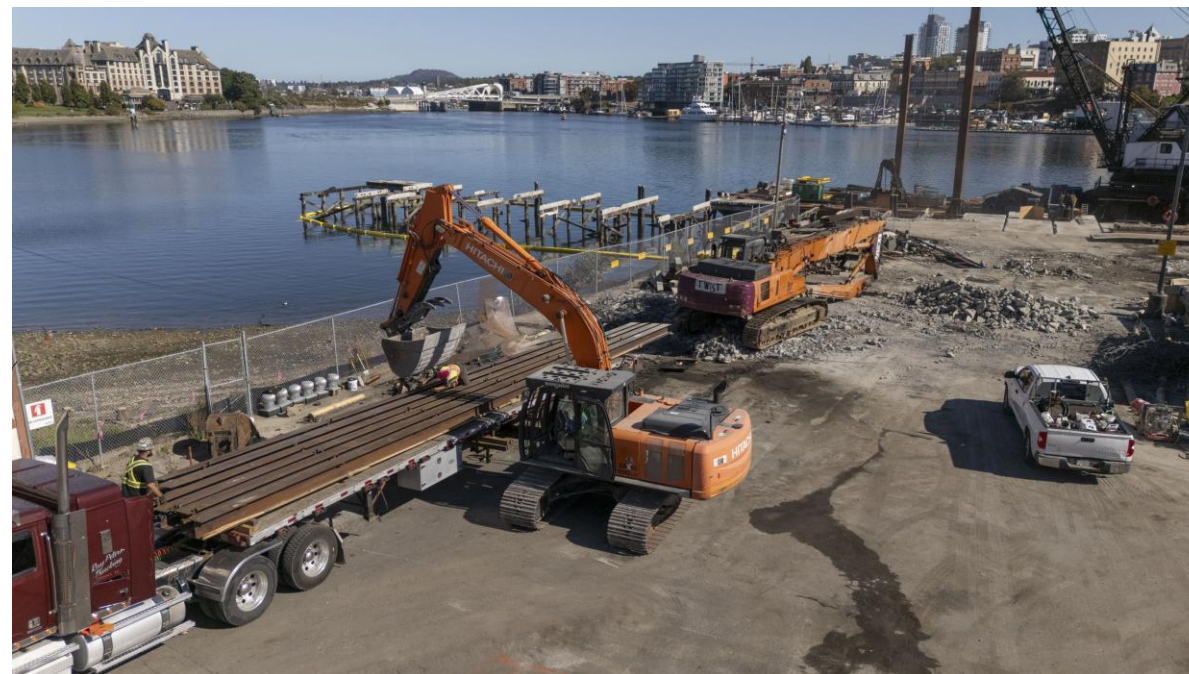


Territorial Acknowledgement

The Province of B.C. acknowledges the Belleville Terminal Redevelopment Project is located on the traditional territory of the Lekwungen Peoples, also known today as the Esquimalt and Songhees Nations.

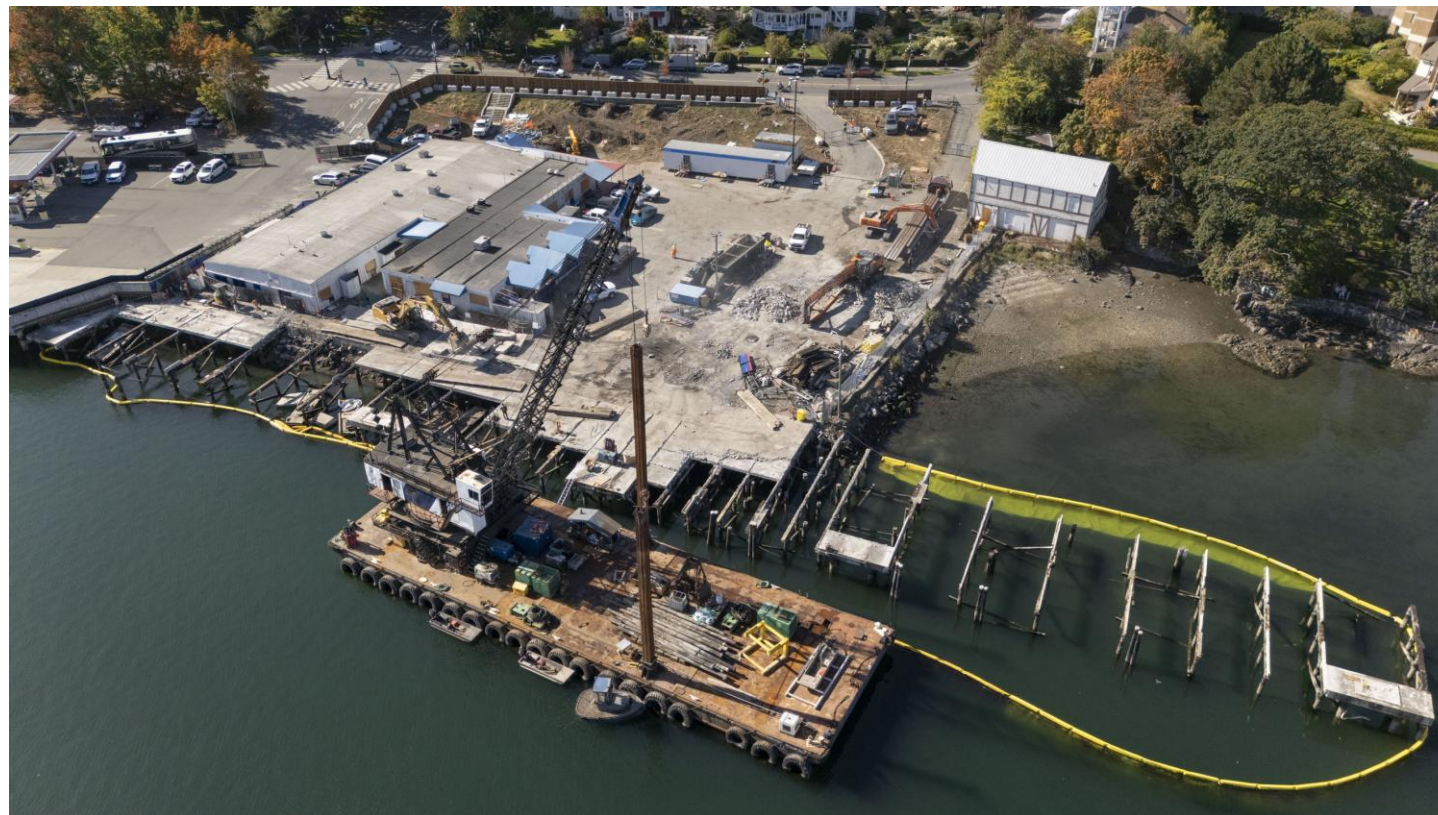
Completed Activities (Since June 2025)

- **Environmental and Structural Assessments:** Preconstruction surveys are now complete.
- **Site Mobilization:** Equipment and staff deployed to site for assessment and demolition work.
- **Marine Survey:** Marine Invertebrate assessment completed to meet environmental requirements.
- **Safety and Signage:** Barriers and project fence signs have been installed.
- **Utilities:** Initial disconnections and decommissioning of existing utility services.
- **Main Site Office Trailer:** Installation of initial site trailer office has been completed.



Work in Progress (Ongoing)

- **Demolition:** Removal of existing concrete wharf panels and timber piles. Terminal structures being disassembled and removed, with on-site sorting and recycling of materials to reduce waste and meet LEED certification requirements.
- **Monitoring:** Vibration and sound levels are being monitored in real time to ensure safety and compliance with regulations.

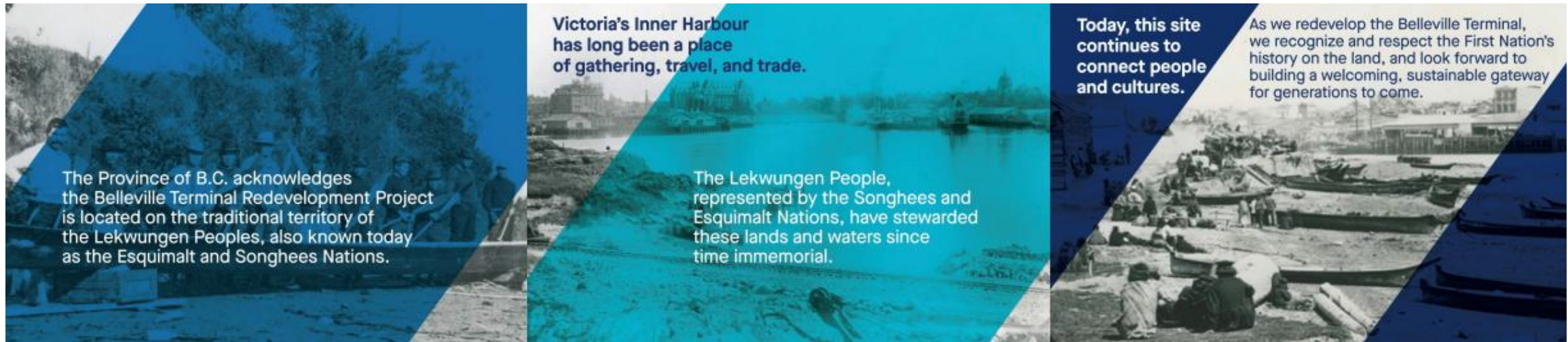


Upcoming Site Work (October to December 2025)

- **Improved Access:** Widening and paving the site entrance to support future construction activities.
- **Site Offices:** Additional trailers will be installed to accommodate workforce on site.
- **Continued Demolition:** Ongoing removal of the existing Clipper Terminal Building.
- **Dredging:** Scheduled to begin this winter to remove contaminated soils.



Indigenous Engagement – Quarterly Highlight



- **Fencing Panels:** In collaboration with the Esquimalt and Songhees Nations, project fencing panels were installed around the perimeter of the terminal construction zone to recognize the traditional territories of the lək' wəŋən (Lekwungen) Peoples and to educate and inform the public about the cultural and historical significance of the area.
- **Cultural Monitors:** Individuals from Esquimalt and Songhees Nations have been, and continue to be, on site to observe and participate in construction or land-altering activities to help ensure that Indigenous cultural heritage is respected and protected.
- **Cultural Recognition:** Launched discussions with Esquimalt and Songhees Nations on art and cultural recognition, including the integration of lək' wəŋən art into the new terminal.

Engagement – Quarterly Update

- Presented to the Transport Canada Port Operations and Safety Committee in August and October 2025 to ensure key stakeholders and commercial operators are informed and to identify potential issues for mitigation.
- Indigenous education and outreach fence panels posted around perimeter of construction site.
- 3 impact notifications shared: providing advance notice to key stakeholders, construction site neighbours and the public about construction impacts and identifying mitigation measures taken.
- 1,162 visits to the project website: strong community interest and engagement.
- 82 in-person and virtual meetings and phone calls with stakeholders since July 2025 – providing timely information and projects updates.



Thank you.

