

Ogden Point Cruise Ships Counts, 1990 to 2024

The **2024** charts and tables within this report are derived from the [GVHA Schedule](#). (as of March 31st, 2024)

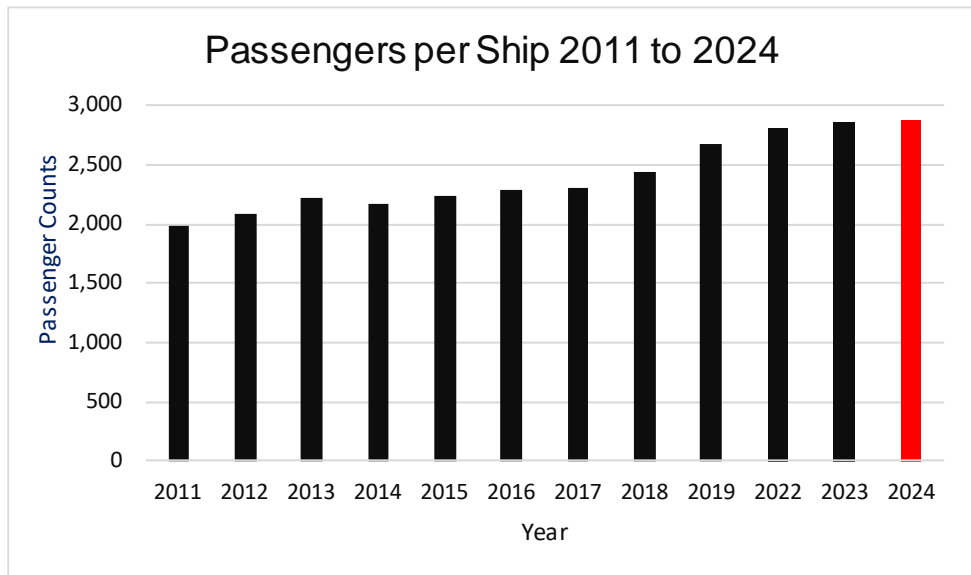
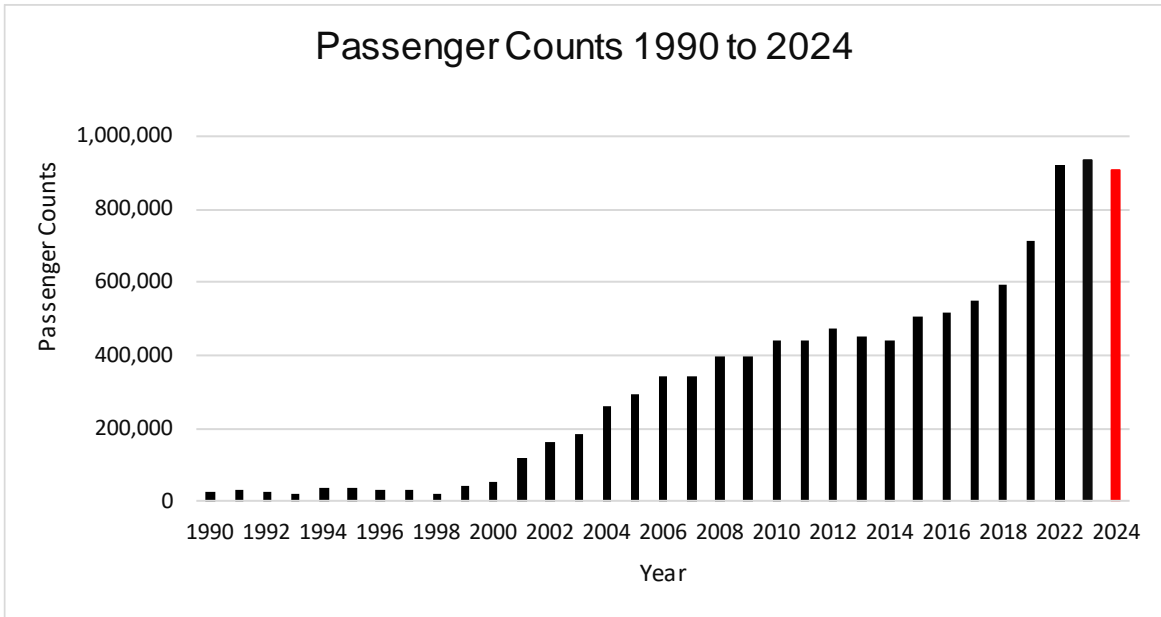
	Cruise Ship data 2011 to 2024											
	2011	2012	2013	2014	2015	2016	2017	2018	2019	2022	2023	2024
Ships	208	229	203	204	227	225	239	243	267	327	326	315
Passengers	414,388	476,916	449,668	442,044	507,842	516,660	551,938	592,166	713,894	922,497	935,479	909,194
Avg. Pax/Ship	1,992	2,083	2,215	2,167	2,237	2,296	2,309	2,437	2,674	2,821	2,870	2,886
Days in Port	104	108	96	102	112	113	116	119	125	163	161	160
Hours in Port	1,502	1,488	1,377	1,475	1,624	1,609	1,654	1,716	1,877	2,089	2,175	1,946
Pax hr in port	6.8	6.3	6.5	7.0	6.8	6.9	6.8	6.7	6.7	6.0	6.2	5.7
Pax % increase						+2%	+7%	+7%	+21%	+29.2%**	1.8%	-3.7%
Ship % increase							+6.2%	+1.7%	+9.9%	+22.5%	-0.3%	-3.4%

Passenger counts are based on the ship capacity. The actual passenger counts are usually higher.

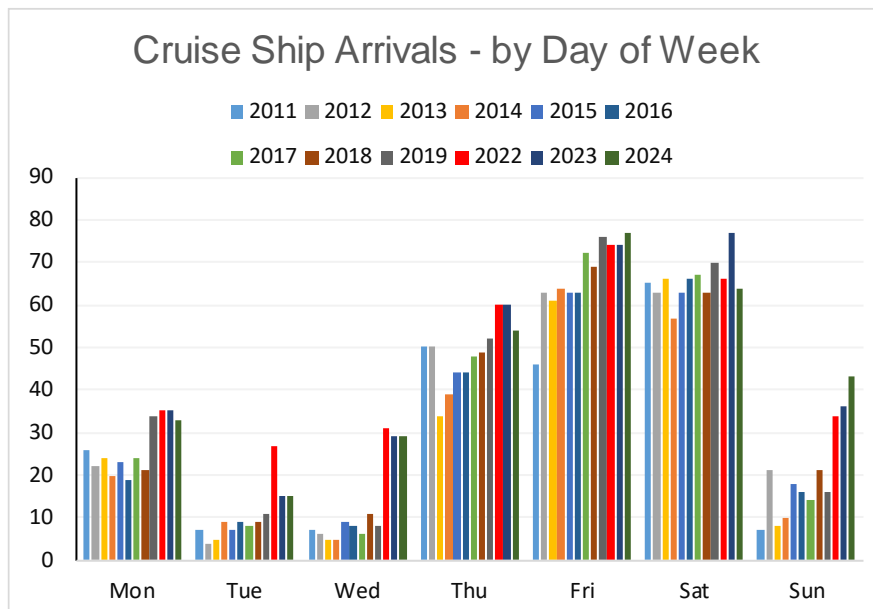
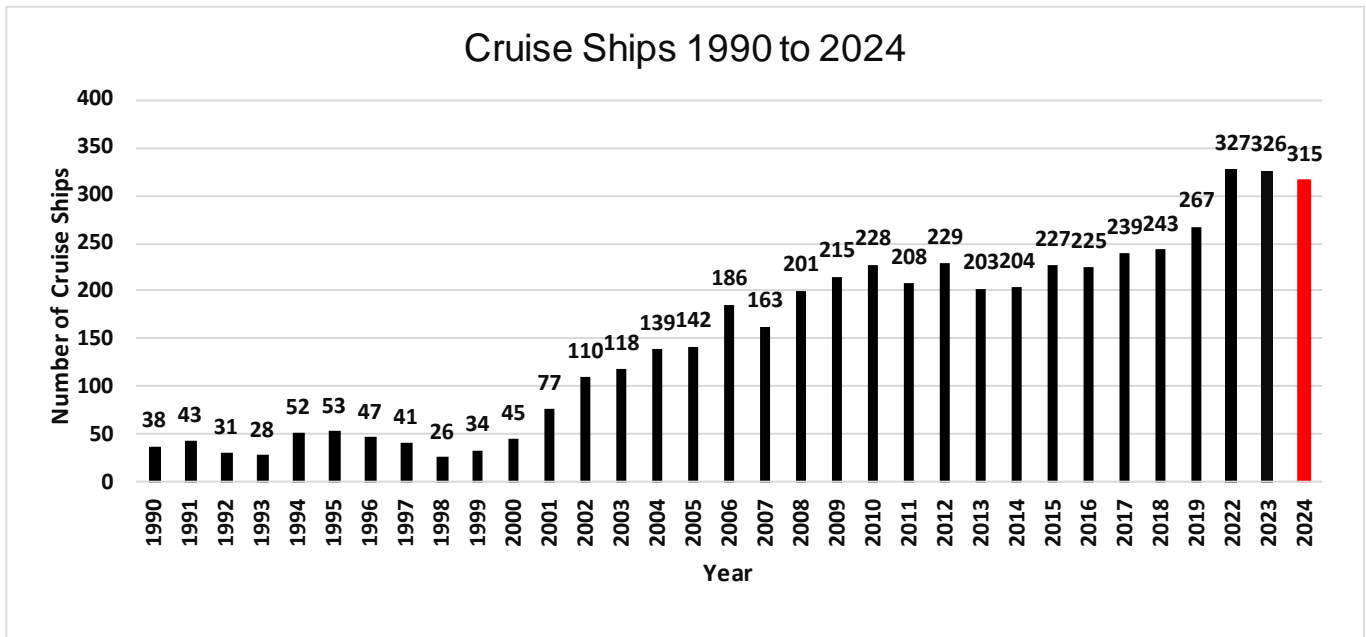
Due to COVID the 2022 actual passenger counts were significantly lower at [715,000](#).



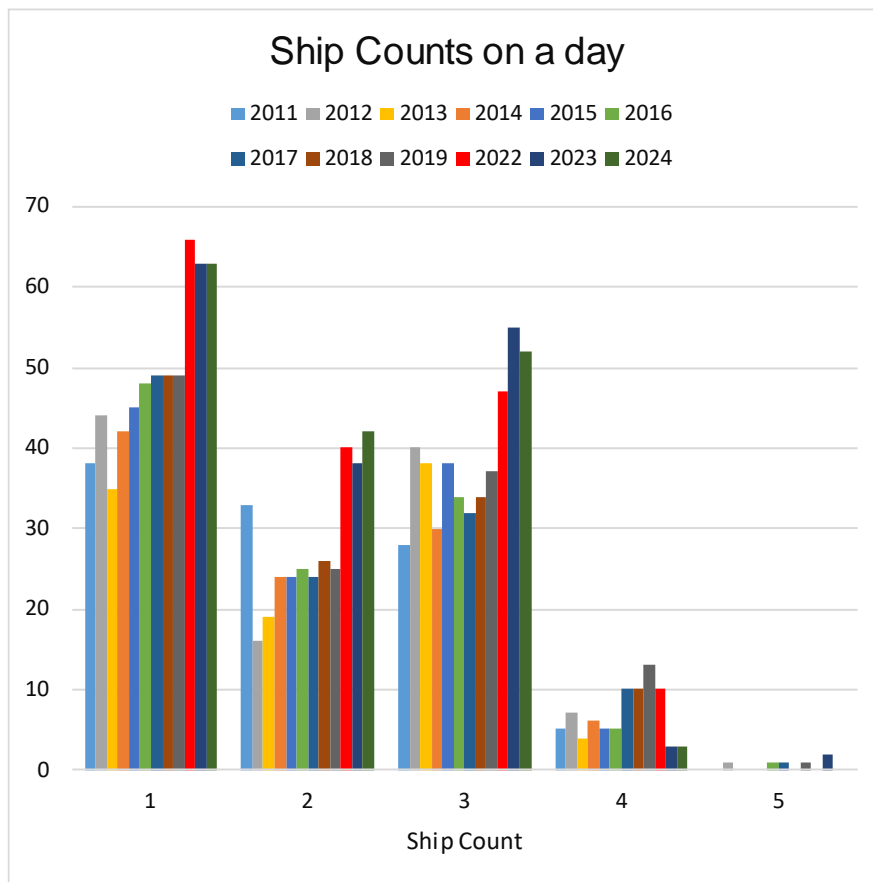
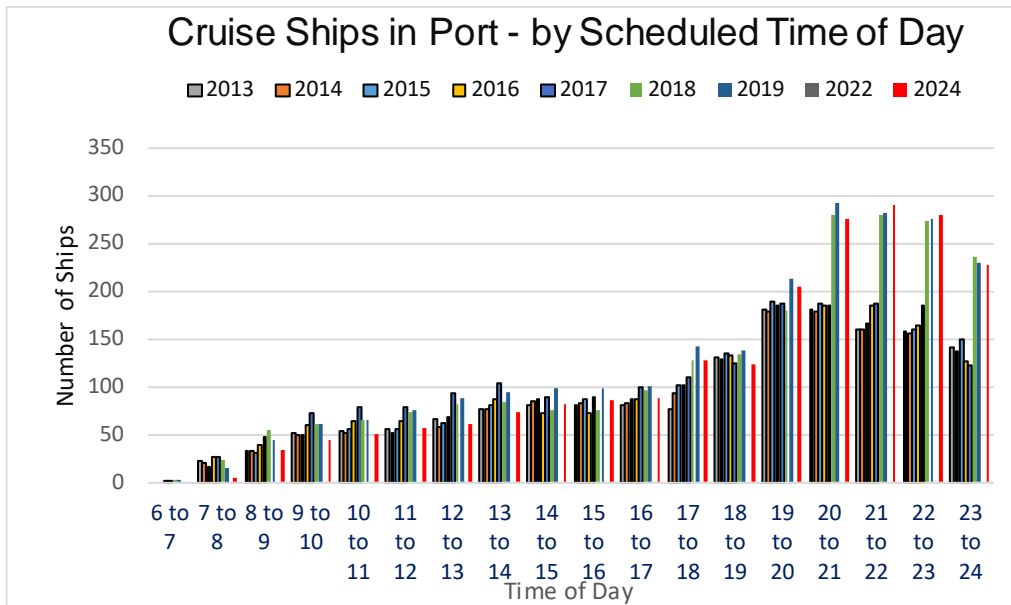
Ogden Point Cruise Ships Counts, 1990 to 2024



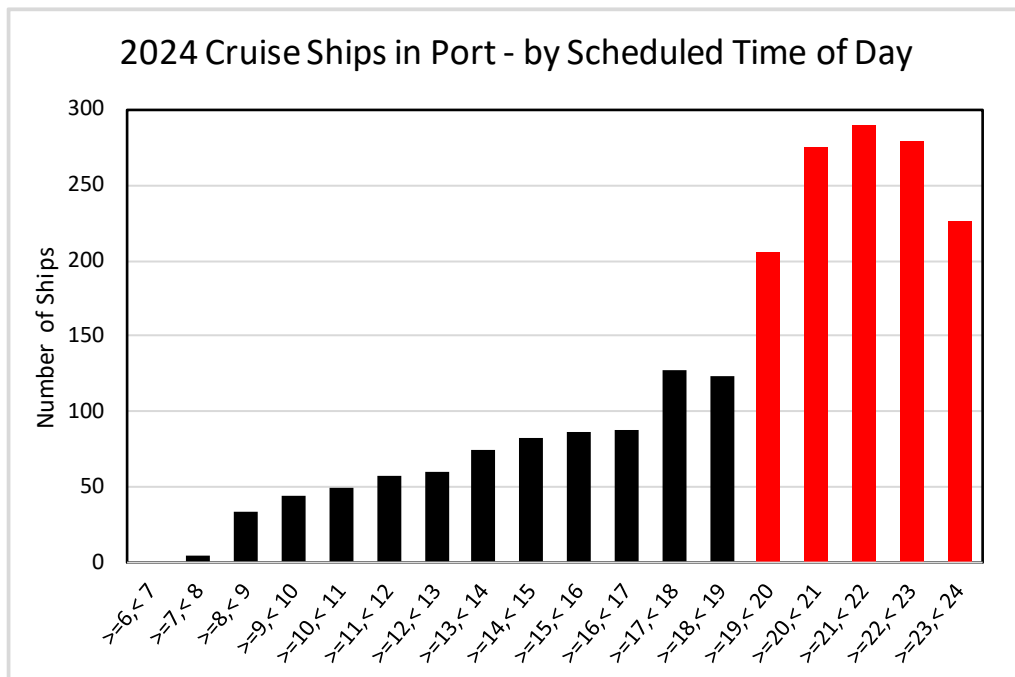
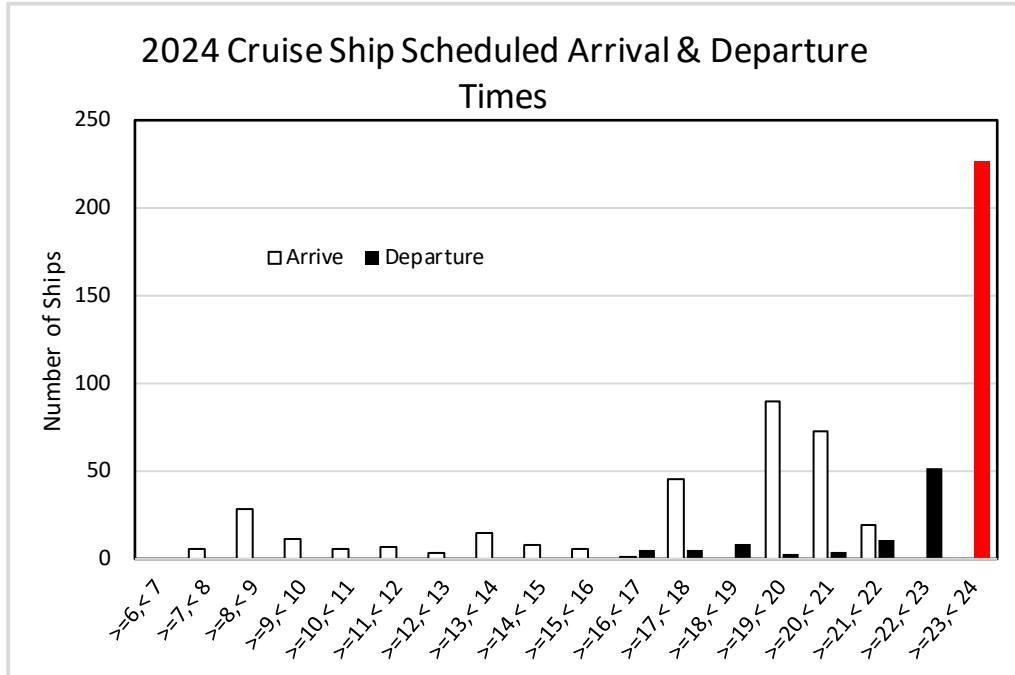
Ogden Point Cruise Ships Counts, 1990 to 2024



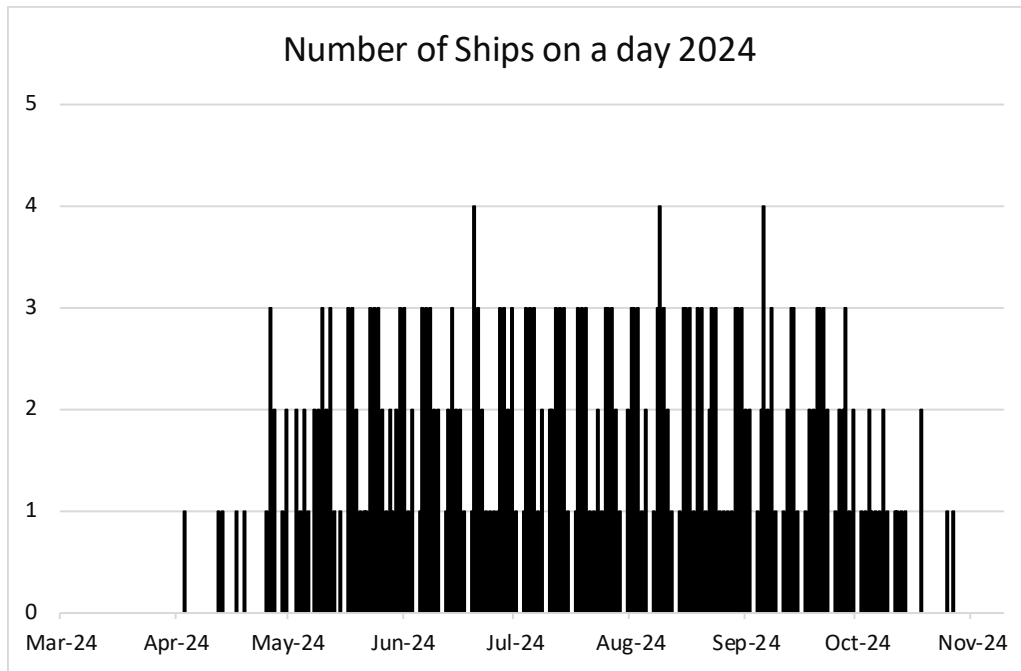
Ogden Point Cruise Ships Counts, 1990 to 2024



Ogden Point Cruise Ships Counts, 1990 to 2024



Ogden Point Cruise Ships Counts, 1990 to 2024



Ogden Point Cruise Ships Counts, 1990 to 2024

2024 Number of days without cruise ships	
April	20
May	5
June	3
July	4
August	2
September	4
October	16

2024		
Time in Port	Count	%
>0h, <1h	0	0%
>=1h, <2h	0	0%
>=2h, <3h	19	6%
>=3h, <4h	73	23%
>=4h, <5h	90	29%
>=5h, <6h	27	9%
>=6h, <7h	19	6%
>=7h, <8h	8	3%
>=8h, <9h	13	4%
>=9h, <10h	11	3%
>=10h, <11h	18	6%
>=11h, <12h	9	3%
>=12h, <13h	4	1%
>=13h, <14h	7	2%
>=14h, <15h	6	2%
>=15h, <16h	11	3%
>=16h, <17h	0	0%
>=17h	0	0%
	315	100%

Ogden Point Cruise Ships Counts, 1990 to 2024

Percentage of departures occurring after 11pm and at midnight

	Visits		
	Total	Departure Time	
		>= 11pm	"11:59pm"
Carnival Cruise Lines	41	39	38
Celebrity Cruise Line	19	17	17
Crystal Cruises	2	1	0
Cunard Line	9	0	0
Disney Cruise Line	2	0	0
Holland America Line	39	37	34
Lindblad Expeditions	6	6	0
MSC Cruises	2	0	0
Norwegian Cruise Line	75	74	73
Oceania Cruises	12	9	0
Princess Cruise Lines	55	40	39
Regent Seven Seas	3	0	0
Royal Caribbean Intl	46	0	0
Silversea	4	4	1
	315	227	202
		72%	64%

Hours in Port

Ship Count	Hours	
	Together	Total
1	835	835
2	301	602
3	169	508
	1,306	1,946

i.e., there are 3 ships together in port for **169** hours; the total hours for all ships is **1,946**

Ogden Point Cruise Ships Counts, 1990 to 2024

Friends of the Earth – [2022 Cruise Ship Report Card](#)

The Friends of the Earth compared the environmental footprint of cruise ships based on Sewage Treatment, Air Pollution Reduction, Water Quality Compliance, Transparency, Criminal Violations, and awarded a grade between “A” and “D” plus a failing grade “F”. The following ships visiting Victoria this year scored either a “D” or an “F”.

	# of visits	
	D	F
BRILLIANCE OF THE SEAS	-	1
CELEBRITY EDGE	-	17
CELEBRITY SUMMIT	-	2
CROWN PRINCESS	8	-
DISCOVERY PRINCESS	-	20
EURODAM	22	-
KONINGSDAM	1	-
MAJESTIC PRINCESS	23	-
NORWEGIAN SUN	17	-
OVATION OF THE SEAS	20	-
QUANTUM OF THE SEAS	23	-
QUEEN ELIZABETH	9	-
RADIANCE OF THE SEAS	-	2
ROYAL PRINCESS	-	-
RUBY PRINCESS	1	-
SEVEN SEAS EXPLORER	3	-
WESTERDAM	14	-
ZAANDAM	1	-
	142	42
	45%	13%
	184	
	58%	

When three ships are in port the estimated hourly GHG emission rate (tCO₂e/h) is likely **45%** of the City of Victoria’s average hourly rate.

	tCO ₂ e/h
City of Victoria	31.8
3 Ships in Port	14.4
	45%

See [P21](#) for basis

Ogden Point Cruise Ships Counts, 1990 to 2024

Ships – Hours in Port

		Visits	Total Hours in Port	Average Hours in Port
BRILLIANCE OF THE SEAS	Royal Caribbean Intl	1	9	9.0
CARNIVAL LUMINOSA	Carnival Cruise Lines	20	80	4.0
CARNIVAL SPIRIT	Carnival Cruise Lines	21	96	4.6
CELEBRITY EDGE	Celebrity Cruise Line	17	110	6.5
CELEBRITY SUMMIT	Celebrity Cruise Line	2	16	8.0
CROWN PRINCESS	Princess Cruise Lines	8	79	9.9
CRYSTAL SERENITY	Crystal Cruises	2	17	8.5
DISCOVERY PRINCESS	Princess Cruise Lines	20	64	3.2
DISNEY WONDER	Disney Cruise Line	2	22	11.0
EURODAM	Holland America Line	22	88	4.0
EXPLORA I	MSC Cruises	2	19	9.5
GRAND PRINCESS	Princess Cruise Lines	1	12	12.0
KONINGS DAM	Holland America Line	1	10	10.0
MAJESTIC PRINCESS	Princess Cruise Lines	23	134	5.8
NATIONAL GEOGRAPHIC QU	Lindblad Expeditions	2	30	15.0
NATIONAL GEOGRAPHIC VEI	Lindblad Expeditions	4	60	15.0
NIEUW AMSTERDAM	Holland America Line	1	14	14.0
NORWEGIAN BLISS	Norwegian Cruise Line	30	140	4.7
NORWEGIAN ENCORE	Norwegian Cruise Line	25	118	4.7
NORWEGIAN JEWEL	Norwegian Cruise Line	3	13	4.5
NORWEGIAN SUN	Norwegian Cruise Line	17	85	5.0
OVATION OF THE SEAS	Royal Caribbean Intl	20	160	8.0
QUANTUM OF THE SEAS	Royal Caribbean Intl	23	130	5.7
QUEEN ELIZABETH	Cunard Line	9	74	8.2
RADIANCE OF THE SEAS	Royal Caribbean Intl	2	20	10.0
REGATTA	Oceania Cruises	12	133	11.1
ROYAL PRINCESS	Princess Cruise Lines	1	9	9.0
RUBY PRINCESS	Princess Cruise Lines	1	13	13.0
SAPPHIRE PRINCESS	Princess Cruise Lines	1	10	10.0
SEVEN SEAS EXPLORER	Regent Seven Seas	3	40	13.3
SILVER MUSE	Silversea	3	45	15.0
SILVER SHADOW	Silversea	1	15	15.0
WESTERDAM	Holland America Line	14	75	5.3
ZAANDAM	Holland America Line	1	9	9.0
		315	1946	6.2

Ogden Point Cruise Ships Counts, 1990 to 2024

		Departure Time														
	2024	>=8am <9am	>=11am <Noon	>=noon <1pm	>=1pm <2pm	>=2pm <3pm	>=3pm <4pm	>=4pm <5pm	>=5pm <6pm	>=6pm <7pm	>=7pm <8pm	>=8pm <9pm	>=9pm <10pm	>=10pm <11pm	>=11pm <midnight	Totals
Arrival Time	6am to 7am															0
	7am to 8am							3	1				1			5
	8am to 9am								4	8		1	1	3	11	28
	9am to 10am							2			2	1		4	2	11
	10am to 11am											1	2	1	2	6
	11am to 12pm													5	2	7
	12pm to 1pm											1		1	1	3
	1pm to 2pm										1		7	1	5	14
	2pm to 3pm													5	3	8
	3pm to 4pm													5		5
	4pm to 5pm														1	1
	5pm to 6pm													27	18	45
	6pm to 7pm															0
	7pm to 8pm														90	90
	8pm to 9pm														73	73
	9pm to 10pm														19	19
	10pm to 11pm															0
	11pm to midnight															0
		0	0	0	0	0	0	5	5	8	3	4	11	52	227	315



Ogden Point Cruise Ships Counts, 1990 to 2024

Arrival Time	Ship Count	% of Total Visits	pax hours in Port
Morning Ships (>=6am , <Noon)	57	18%	10.8
Afternoon+ Ships (>=Noon, <7pm)	76	24%	6.3
Evening Ships (>=7pm, <midnight)	182	58%	4.2
	315		5.7

2024	>=8am <9am	>=11am <Noon	>=noon <1pm	>=1pm <2pm	>=2pm <3pm	>=3pm <4pm	>=4pm <5pm	>=5pm <6pm	>=6pm <7pm	>=7pm <8pm	>=8pm <9pm	>=9pm <10pm	>=10pm <11pm	>=11pm <midnight	Totals
Monday							1	3				3	2	24	33
Tuesday												1	4	10	15
Wednesday								1			2	3		23	29
Thursday							1		6				18	29	54
Friday							1			2				74	77
Saturday							1		1		1	1	4	56	64
Sunday							1	1	1	1	1	3	24	11	43
	0	0	0	0	0	0	5	5	8	3	4	11	52	227	315



Ogden Point Cruise Ships Counts, 1990 to 2024

Ship “TO” and “FROM” Ports

2024	From	To
Alert Bay, BC	1	5
Astoria	6	3
Friday Harbour		1
Glacier Bay	4	
Haines	1	
Hilo, HI	1	
Icy Point	3	
Juneau	33	1
Ketchikan	173	
Los Angeles		2
Nanaimo	1	
Nawiliwili	1	
Port Angeles	1	
Prince Rupert	5	
San Diego	2	
San Francisco	4	10
Santa Barbara	1	
Seattle	7	259
Sitka	20	
Skagway	42	
Vancouver	7	34
Wrangell	2	
	315	315

Ogden Point Cruise Ships Counts, 1990 to 2024

	2024	Ship Counts by Month						Totals	
		Apr	May	Jun	Jul	Aug	Sep		Oct
"Com Ing From" Port	Alert Bay, BC						1		1
	Astoria	4	1					1	6
	Glacier Bay		2			1	1		4
	Haines					1			1
	Hilo, HI	1							1
	Icy Point			1		1	1		3
	Juneau		5	7	8	7	6		33
	Ketchikan	4	31	31	33	38	24	12	173
	Nanaimo					1			1
	Nawiliwili		1						1
	Port Angeles			1					1
	Prince Rupert		1	1	1	1	1		5
	San Diego		1				1		2
	San Francisco	3	1						4
	Santa Barbara	1							1
	Seattle	1	1				3	2	7
	Sitka		1	3	5	4	6	1	20
	Skagway		5	11	9	11	6		42
	Vancouver		1				4	2	7
	Wrangell			1	1				2
	Totals	14	51	56	57	65	54	18	315

Ogden Point Cruise Ships Counts, 1990 to 2024

	2024	Ship Counts by Month							Totals
		Apr	May	Jun	Jul	Aug	Sep	Oct	
"GoingTo" Port	Alert Bay, BC	1	1				1	2	5
	Astoria						3		3
	Friday Harbour						1		1
	Juneau		1						1
	Los Angeles						2		2
	San Francisco		2	1	2	2	2	1	10
	Seattle	4	41	51	51	59	40	13	259
	Vancouver	9	6	4	4	4	5	2	34
									0
									0
								0	
	Totals	14	51	56	57	65	54	18	315

Ogden Point Cruise Ships Counts, 1990 to 2024

		COMING FROM																					
	2024	Alert Bay, BC	Astoria	Glacier Bay	Haines	Hilo, HI	Icy Point	Juneau	Ketchikan	Nanaimo	Nawiliwili	Port Angeles	Prince Rupert	San Diego	San Francisco	Santa Barbara	Seattle	Sitka	Skagway	Vancouver	Wrangell	Totals	
GOING TO	Alert Bay, BC																5					5	
	Astoria												1				1				1		3
	Friday Harbour	1																					1
	Juneau		1																				1
	Los Angeles													1							1		2
	San Francisco			4	1			2												1	2		10
	Seattle		1				2	31	165	1			3					11	41	3	1		259
	Vancouver		4			1	1		8		1	1	1	1	4	1	1	9				1	34
		1	6	4	1	1	3	33	173	1	1	1	5	2	4	1	7	20	42	7	2	315	



Ogden Point Cruise Ships Counts, 1990 to 2024

Ship "Arriving From" ports with visit counts.

2024	Passengers (Normal Capacity)	Ship Count for Arriving From Port																		Total Visits	Total Passengers @ 100% capacity			
		Alert Bay, BC	Astoria	Glacier Bay	Haines	Hilo, HI	Icy Point	Juneau	Ketchikan	Nanaimo	Nawiliwili	Port Angeles	Prince Rupert	San Diego	San Francisco	Santa Barbara	Seattle	Sitka	Skagway			Vancouver	Wrangell	
BRILLIANCE OF THE SEAS	2,543																		1			1	2,543	
CARNIVAL LUMINOSA	2,260																					20	45,200	
CARNIVAL SPIRIT	2,124																	1					21	44,604
CELEBRITY EDGE	2,918																		17				17	49,606
CELEBRITY SUMMIT	2,218													1					1				2	4,436
CROWN PRINCESS	3,080			4	1			2										1					8	24,640
CRYSTAL SERENITY	1,080										1						1						2	2,160
DISCOVERY PRINCESS	3,660	1						19															20	73,200
DISNEY WONDER	2,400												1				1						2	4,800
EURODAM	2,104							22															22	46,288
EXPLORA I	922	1								1													2	1,844
GRAND PRINCESS	2,606													1									1	2,606
KONINGS DAM	2,650				1																		1	2,650
MAJESTIC PRINCESS	3,560															1		20	2				23	81,880
NATIONAL GEOGRAPHIC C	100	1														1							2	200
NATIONAL GEOGRAPHIC V	100															4							4	400
NIEUW AMSTERDAM	2,106														1								1	2,106
NORWEGIAN BLISS	4,250					2		27					1										30	127,500
NORWEGIAN ENCORE	3,998	1						24															25	99,950
NORWEGIAN JEWEL	2,376							3															3	7,128
NORWEGIAN SUN	1,936							17															17	32,912
OVATION OF THE SEAS	4,180						9										7	4					20	83,600
QUANTUM OF THE SEAS	4,180						22												1				23	96,140
QUEEN ELIZABETH	2,081					1		2								5				1			9	18,729
RADIANCE OF THE SEAS	2,500	1																	1				2	5,000
REGATTA	684	1							1			4					5			1			12	8,208
ROYAL PRINCESS	3,560																		1				1	3,560
RUBY PRINCESS	3,080	1																					1	3,080
SAPPHIRE PRINCESS	2,600												1										1	2,600
SEVEN SEAS EXPLORER	754							3															3	2,262
SILVER MUSE	596							3															3	1,788
SILVER SHADOW	382											1											1	382
WESTERDAM	1,840							13								1							14	25,760
ZAANDAM	1,432													1									1	1,432
		1	6	4	1	1	3	33	173	1	1	1	5	2	4	1	7	20	42	7	2	0	315	909,194

Ogden Point Cruise Ships Counts, 1990 to 2024

Ships – Historical Visits

	2011	2012	2013	2014	2015	2016	2017	2018	2019	2022	2023	2024	Totals
Amsterdam	12	12	1	14	17	19	11	18	11				115
Arcadia	1												1
Asuka li`									1				1
Azamara Quest									3				3
Brilliance of the Seas											1	1	2
Caribbean Princess													0
Carnival Freedom													0
Carnival Legend					14	15	17	17	18				81
Carnival Luminosa											20	20	40
Carnival Miracle			16	16						11			43
Carnival Spirit	18	18								20	21	21	98
Carnival Splendor										16			16
Celebrity Century	1	2	3	3									9
Celebrity Eclipse	1	2	3	3									9
Celebrity Edge	1	2	3	3							17	17	43
Celebrity Infinity	19	19			3	3	1						45
Celebrity Millennium	2	2			1		1		1	2			9
Celebrity Solstice	2	2			1		1		1	2			9
Celebrity Summit	2	2			1		1		1	2	2	2	13
Coral Princess		1		1	2	1	1	2					8
Crown Princess				2	19	18				20	8	8	75
Crystal Serenity		1				4	3				2	2	12
Crystal Symphony	11		1		1			3	5				21
Dawn Princess		1											1
Discovery Princess								3		20	20	20	63
Disney Wonder	2	15	1	1	1	1	1	1	3	2	2	2	32
Emerald Princess							18	20	1				39
Eurodam							23	22	22	24	22	22	135
Europa							23	22	22	24			91
Explora I							23	22	22	24	2	2	95
Explorer Of The Seas					21	21	21						63
Golden Horizon													0
Golden Princess	19	17	19	19	15		1	1	1				92
Grand Princess			13	19	2	13	14	16	16	2	1	1	97
Hanseatic		1			0								1
Jewel Of The Seas					19								19
Island Princess	2	1		2		1	1	1	1				9
Koningsdam										1	1	1	3
L'Austral									1				1

Ogden Point Cruise Ships Counts, 1990 to 2024

	2011	2012	2013	2014	2015	2016	2017	2018	2019	2022	2023	2024	Totals
Le Soleal										2			2
Maasdam													0
Majestic Princess											3	23	26
MS Insignia											1		1
National Geographic											6		6
National Geographic Quest										2		2	4
National Geographic Venture										4		4	8
Nieuw Amsterdam						1	1	1	1	1	2	1	8
Noordam					2	1	1		1	2	2		9
Norwegian Bliss								19	23	24	29	30	125
Norwegian Encore										24	25	25	74
Norwegian Jewel		19	20	18	22	22	21	1	1			3	127
Norwegian Joy									25				25
Norwegian Pearl	19	21	21	20	21	22	21	21					166
Norwegian Spirit										10			10
Norwegian Sun			2	1	3		1	1		21	19	17	65
Ocean Victory													0
Oosterdam	22	21	21				23		22				109
Ovation Of The Seas									19	21	21	20	81
Pacific Princess					1								1
Quantum Of The Seas										23	20	23	66
Queen Elizabeth									4	4	6	9	23
Radiance Of The Seas	1			1						1	2	2	7
Regatta	4		4	7	10	7	7	9	11	11	13	12	95
Rhapsody Of The Seas	15	17	14	15									61
Royal Princess									1	6	23	1	31
Ruby Princess					19	20	22	23	21	4	1	1	111
Sapphire Princess	20	2	2								2	1	27
Scenic Eclipse										1	1		2
Scenic Eclipse II													0
Sea Princess	13	12											25
Seabourn Odyssey										2	3		5
Serenade Of The Seas										1			1
Seven Seas Explorer												3	3
Seven Seas Mariner						2	4	4	4	2			16
Seven Seas Navigator	2	2	2	2	3		2						13

Ogden Point Cruise Ships Counts, 1990 to 2024

	2011	2012	2013	2014	2015	2016	2017	2018	2019	2022	2023	2024	Totals
Silver Discoverer										2			2
Silver Explorer													0
Silver Muse												3	3
Silver Shadow												1	1
Silver Wind													0
Sojourn													0
Star Breeze													0
Star Princess		18	18	15	1	1	1	1	22				77
Statendam	2	3	1		9								15
Sun Princess		0				1							1
The World		1					1	2					4
Viking Orion										3			3
Volendam									2		2		4
Westerdam	21	20	21	22	21	22		1		15	21	14	178
Zaandam	2	1	2	3	1	1	2	10				1	23
Zuiderdam			1	1						1			3
	208	227	201	200	226	214	240	239	262	326	326	315	

Ogden Point Cruise Ships Counts, 1990 to 2024

Cruise Ship Greenhouse Gas Emissions

What is the Green House Gas (GHG) emission rate when three cruise ships are in port and how does it compare with the City of Victoria GHG estimate for **2024**?

Summary

The report contains 4 sections:

- An estimate of the **2024** cruise ship GHG emissions.
- An estimate of the **2024** City of Victoria GHG emissions.
- An estimate of the **2024** cruise ship hours in port for the 1, 2 & 3 ship combinations.
- A comparison of both the cruise ship and City hourly and annual emission rates.

The conclusion is that when three ships are in port the estimated hourly GHG emission rate (tCO₂e/h) is likely **45%** and possibly over **58%** of the City of Victoria’s average hourly rate.

1) Green House Gas (GHG)– Estimating the **2024** cruise ship emissions (measured in tCO₂e)

The following analysis uses two sources to estimate the total **2024** cruise ship GHG emissions:

- [2019 GHVA Emissions Inventory](#) – includes 2018 GHG data.
- [The 2019 Capital Daily Report](#)

In both cases the **2024** estimate is obtained by prorating the hours the ships were in port to the currently scheduled **2024** cruise ship hours.

1a) GVHA Emissions Inventory

The GHVHA report estimates the total cruise ship GHG for 2018 while docked at Ogden Point at 8,252 tonnes.

Prorating this amount by the ratio of **2024** hours to 2018 hours gives a **2024** estimate of **9,358** tonnes.

	Hours in Port	tCO ₂ e
		GVHA from report
2018	1,716	8,252
2024	JBNA estimate	Prorate based on hours
	1,946	9,358
tCO ₂ e/h		4.8

Ogden Point Cruise Ships Counts, 1990 to 2024

1b) Capital Daily

The Capital Daily report estimates the total cruise ship GHG for 2019 while docked at Ogden Point at 11,406 tonnes.

Prorating this amount by the ratio of **2024** hours to 2019 hours gives a **2024** estimate of **12,017** tonnes

	Hours in Port	tCO ₂ e
	Capital Daily	
	from report	
2019	1,847	11,406
2024	JBNA estimate	Prorate based on hours
	1,946	12,017
tCO ₂ e/h		6.2

2) Estimate of the total City of Victoria CHG emissions for 2024

The City's [2022 Climate Leadership Plan Progress Report Update](#) provides a figure of 314,000 tCO₂e for 2020 and notes this to be a 24% reduction from the 2007 level. From these figures the 2030 target of 50% the 2007 level is calculated at 207,000 tCO₂e

From these figures an estimate for **2024** is **278,333** tCO₂e (=31.8 tCO₂e/h)

	tCO ₂ e	tCO ₂ e/h
	From City Reports	
2021	314,000	36
2030	207,000	24
2024	interpolate between years	
	278,333	31.8

Ogden Point Cruise Ships Counts, 1990 to 2024

3) Cruise ship hours in port

Ships in Port at the same time	Total "ship" hours	Total "together in port" hours	Based on prorated 2019 Capital Daily GHG		Based on prorated 2018 GVHA GHG	
			tCO2e	tCO2e/h	tCO2e	tCO2e/h
1	835	835	5,158	6.2	4,017	4.8
2	602	301	3,721	12.4	2,897	9.6
3	508	169	3,139	18.5	2,444	14.4
	1,946	1,306	12,017	9.2	9,358	7.2

The table above is based on the above and an analysis of the GVHA cruise ship schedule.

4a) Comparison of the 2024 tCO2e hourly rates for "3 ships in Port" and "Total City of Victoria"

2024 tCO2e/h	
City of Victoria	
31.8	
Capital Daily	GVHA
18.5	14.4
58.3%	45.4%

We therefore have two estimates for the Cruise Ship hourly GHG emission rate when 3 ships are in port:

- 45% of the City of Victoria emission rate based on the GHHA report.
- 58% of the City of Victoria emission rate based on the Capital Daily report.

Ogden Point Cruise Ships Counts, 1990 to 2024

4b) Comparison of the total **2024** tCO2e emissions for the Ogden Point Cruise Ships and the City of Victoria

2024 tCO2e	
City of Victoria	
278,333	
Capital Daily	GVHA
12,017	9,358
4.3%	3.4%

We therefore have two estimates for the Cruise Ship total **2024** GHG emissions:

- **3.4%** of the City of Victoria emissions based on the GHHA report.
- **4.3%** of the City of Victoria emissions based on the Capital Daily report.