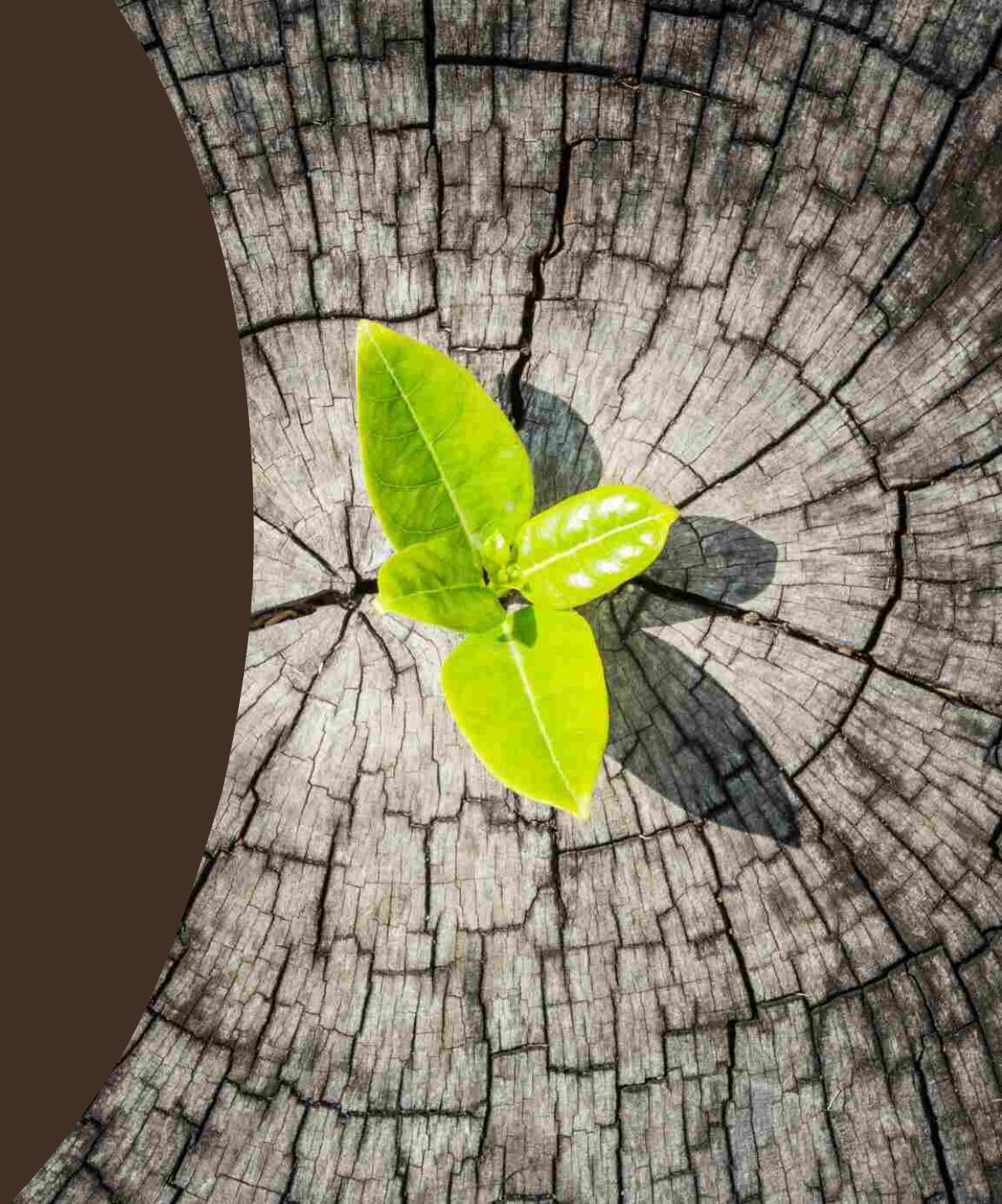


# Growing the Urban Forest

An Exploration of Possibilities



# Clever Urban Forest Ideas to Steal

- Miyawaki Tiny Forests
- Citizen scientists, tree stewards & forest advocates
- Depaving
- Tree mapping and "awards"
- Buildings as forests





# Miyawaki Tiny Forests

- Developed in Japan
- Can be planted in as little as 4 x 4m
- 3-5 saplings/sq m; mixed species
- Trees grow very quickly
- Mumbai requires all development on over 10,000 sq m to set aside 5% of land for a tiny forest



# Citizen Scientists, Tree Stewards, & Forest Advocates

- We have 5 tree stewards in James Bay
- Chicago has a program of training a resident 'tree advocate' for each neighbourhood
- Many cities register volunteers for boulevard tree watering
- Citizen science programs

# Depaving

- Depaving lifts unnecessary pavement making room for trees & plants
- Playgrounds, parking lot edges
- Depave Paradise - a Canadian organization that supports community depaving





# TREE OF THE YEAR

EUROPE

## Tree Mapping and Awards

- Many areas map significant trees and/or tree cover
- Big Tree BC lists the biggest specimens of each species
- Champion trees
- Tree of the Year

# Buildings as Forest

