

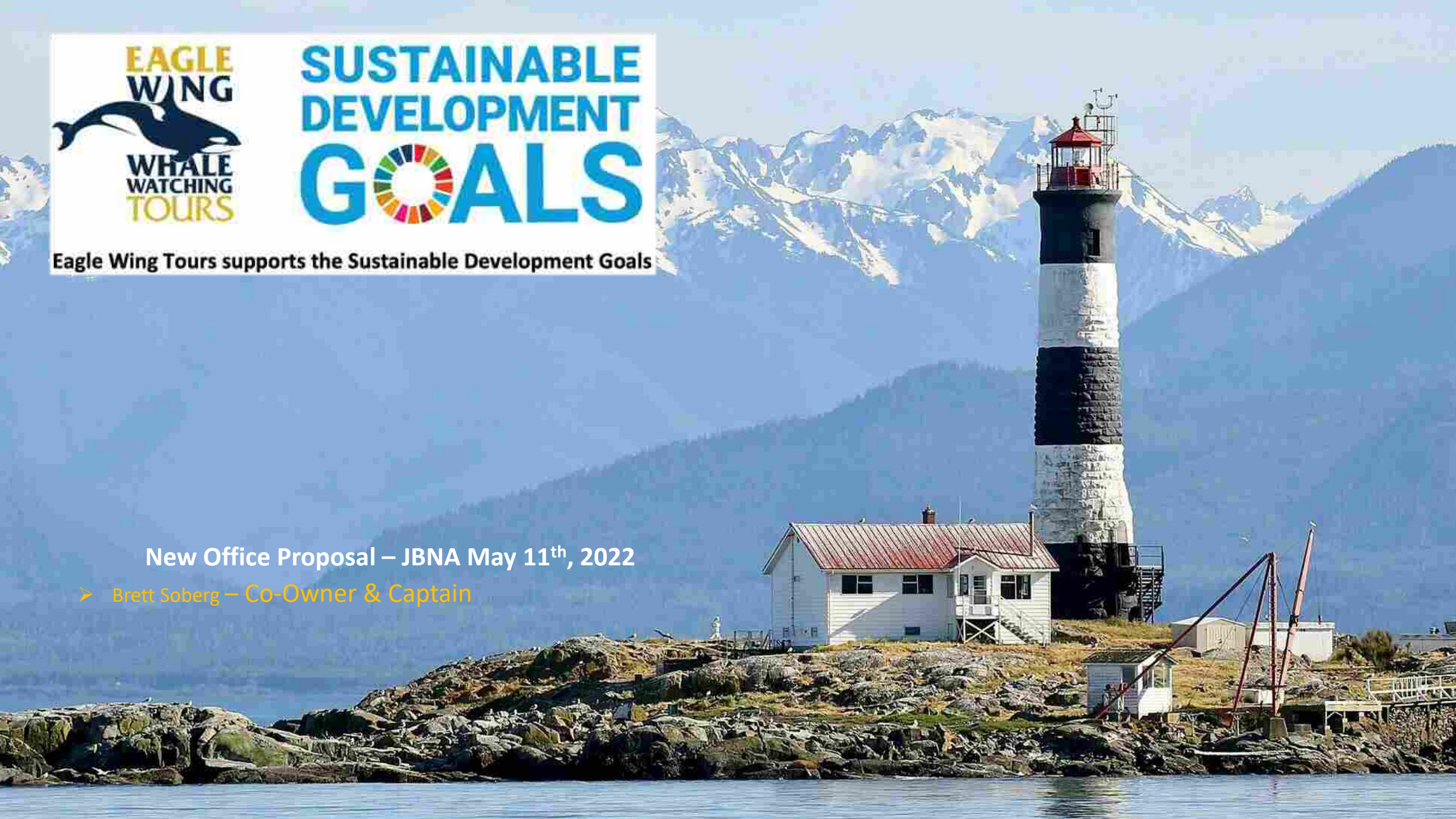


**SUSTAINABLE
DEVELOPMENT
GOALS**

Eagle Wing Tours supports the Sustainable Development Goals

New Office Proposal – JBNA May 11th, 2022

➤ **Brett Soberg – Co-Owner & Captain**



Who is Eagle Wing Tours?

- Locally owned family business since 1997 (26 years)
- We offer a “premier boutique” whale & wildlife experience
- 4 pillars: conservation, sustainability, research, education
- Leaders in the industry: both on and off the water...



Leaders in Sustainability...



- 100% Carbon neutral
- Will have donated \$1M by 2023
- Work with the Songhees Nation
- Wild 4 Whales Foundation
- Research on the boats
- Adopted the UN SDG's – 2020
- A unique “floating classroom” program

Operational Needs Into the Future...

Eagle Wing Boats

Downtown Victoria

- Replace our 50-year old houseboat/office
- Place for staff to get out of the “elements” between tours
- Better guest experience
- Better “traffic flow/management”

Short walk to boats

Eagle Wing Office



Our Current office

- Existing Office (1972)
- 40' x 14'
- 1 storey
- 480 sq' total



New office proposal

- **New Office** (2023)
- Length x width: 40' x 20'
- Height: 18' 10 ½" (5.74m--approx.)
- 1.5 storeys
- 1200 sq' total
- In existing location



New office - details



- Clear sightlines from parking lot
- Songhees artwork on building
- Eclectic look to harmonize with the Fisherman's Wharf Design guidelines

New office - details

Views:

- East end of building (dock)
- East end of building (upper walkway)



New office - details

Views:

- West end of building (central dock)
- Southwest end of building (Elevation)



New office - details

Views:

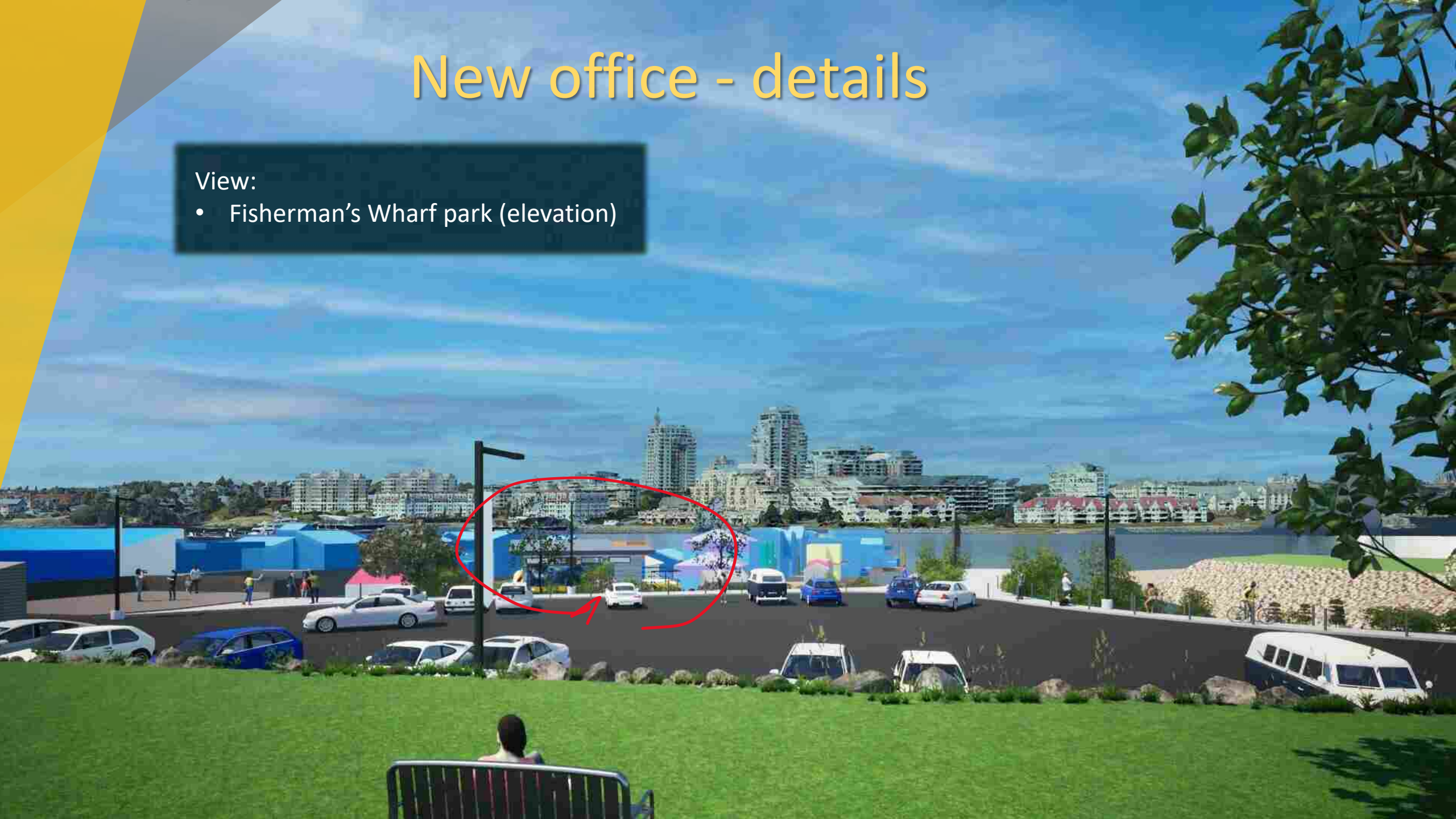
- Northwest B Dock (dock)
- Southwest (bottom of Ramp)



New office - details

View:

- Fisherman's Wharf park (elevation)



A photograph of a sunset over the ocean. The sun is a bright, glowing orb in the center of the upper half of the frame, partially obscured by dark, wispy clouds. The sun's light creates a shimmering, golden path of reflection on the dark water's surface. In the middle ground, a dark, triangular shape, likely a shark's dorsal fin, is visible breaking the water's surface. The background shows a dark, silhouetted horizon line. The overall mood is serene and mysterious. In the top-left corner, there is a yellow and grey geometric graphic element.

THANK YOU. Any questions?