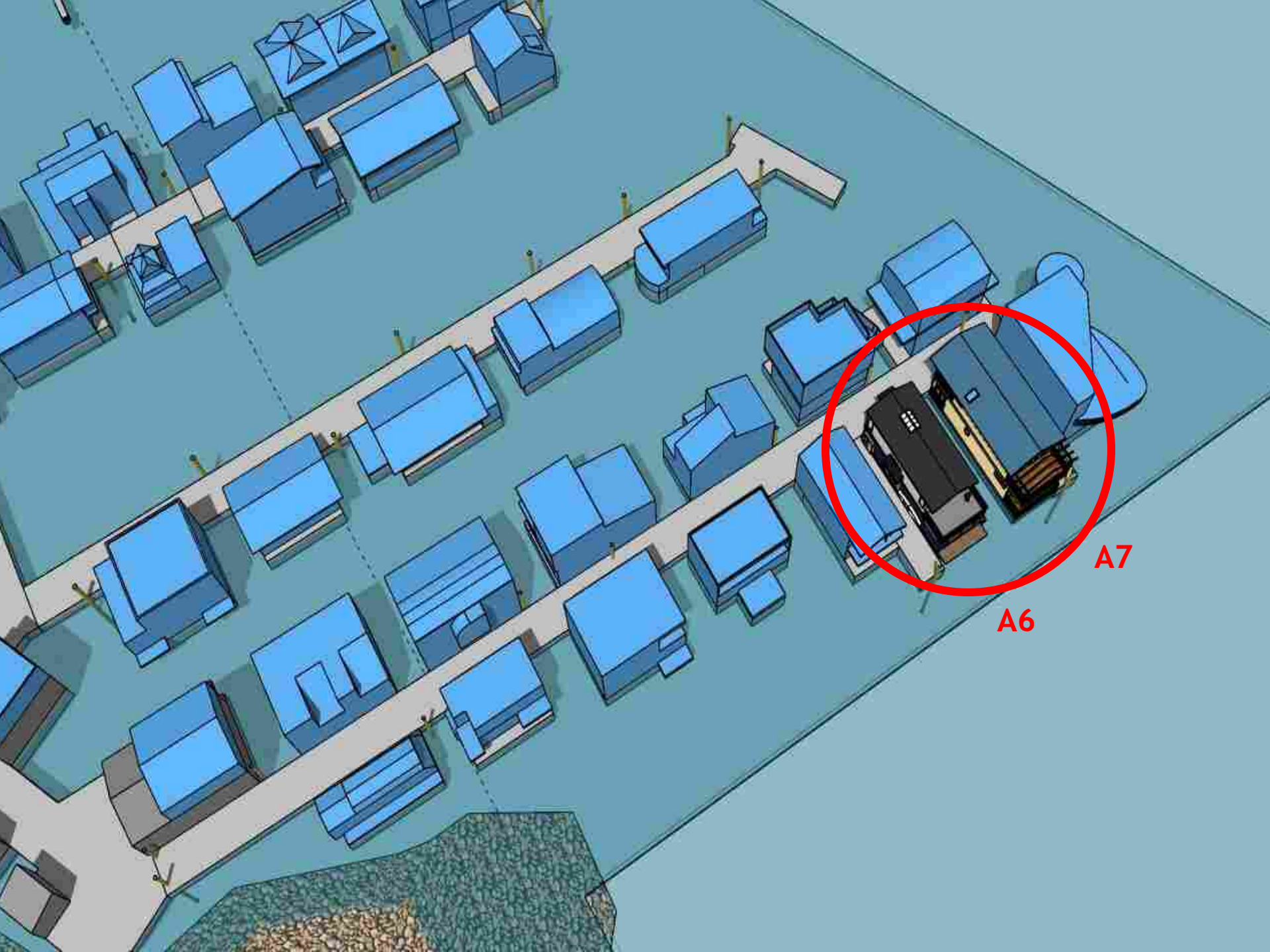


Float homes to be replaced at Fisherman's Wharf - Dock A



A6
Banana Boat

A7
Sam-I-Am



A7

A6

Objectives

Seek approval from the residents and neighbours of Fisherman's Wharf, James Bay to replace the current float homes at A6 and A7 - 1 Dallas Road with newly constructed float homes.

Significantly improve the living conditions and amenities of the current float homes.

Positively contribute to the eclectic, quirky vibe and aesthetic of Fisherman's Wharf.

the BOAT





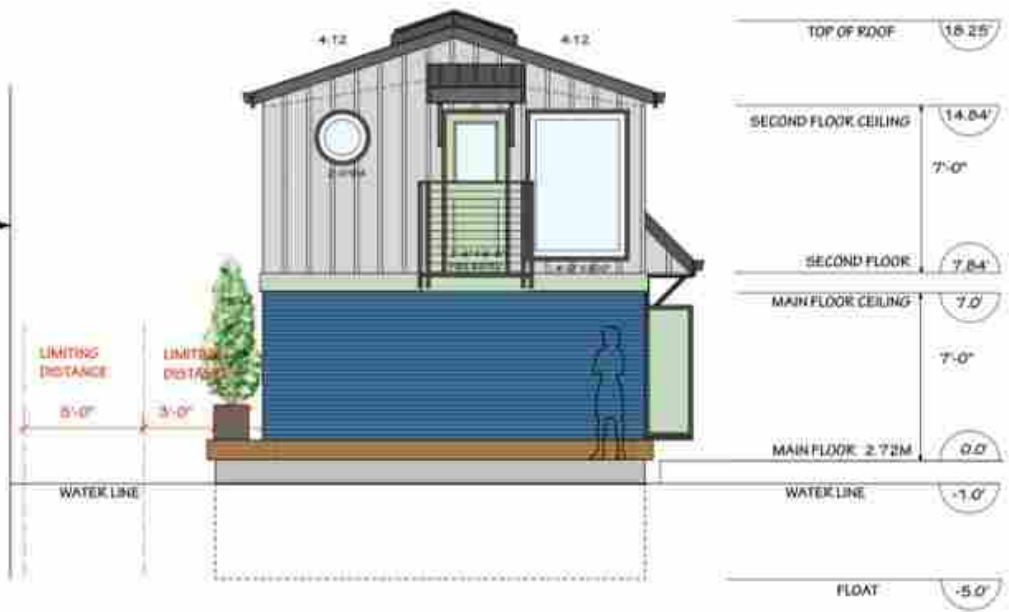
- EXTERIOR FINISHES**
- METAL ROOFING - BLACK
 - METAL GUTTERS AND DOWNPIPES - BLACK
 - BOARD & BATTEN CEDAR SIDING
PAINTED CASCADIA METALS - SURF WHITE
 - HORIZONTAL CORRUGATED METAL
CASCADIA METALS - LABRADOR BLUE
 - HORIZONTAL CEDAR SIDING - STAINED
 - VINYL WINDOWS - WHITE
 - WINDOW TRIM - BLACK
 - METAL FIRE RATED DOORS - LIME GREEN
 - METAL GUARDRAILS - BLACK

EAST ELEVATION SCALE 1/4" = 1'-0"



SOUTH ELEVATION SCALE 1/4" = 1'-0"

NEIGHBORING STRUCTURE



- EXTERIOR FINISHES**
- METAL ROOFING - BLACK
 - METAL GUTTERS AND DOWNPIPES - BLACK
 - BOARD & BATTEN CEDAR SIDING
 - PAINTED CASCADIA METALS - SURF WHITE
 - HORIZONTAL CORRUGATED METAL
 - CASCADIA METALS - LABRADOR BLUE
 - HORIZONTAL CEDAR SIDING - STAINED
 - VINYL WINDOWS - WHITE
 - WINDOW TRIM - BLACK
 - METAL FIRE RATED DOORS - LIME GREEN
 - METAL GUARDRAILS - BLACK

WEST ELEVATION SCALE 1/4" = 1'-0"



NORTH ELEVATION SCALE 1/4" = 1'-0"

Guytanic - North Elevation (mini dock side)

David Guy
A7-1 Dallas Road



NORTH ELEVATION

SCALE 1 : 50

East Elevation (main dock) and West Elevation (water side)

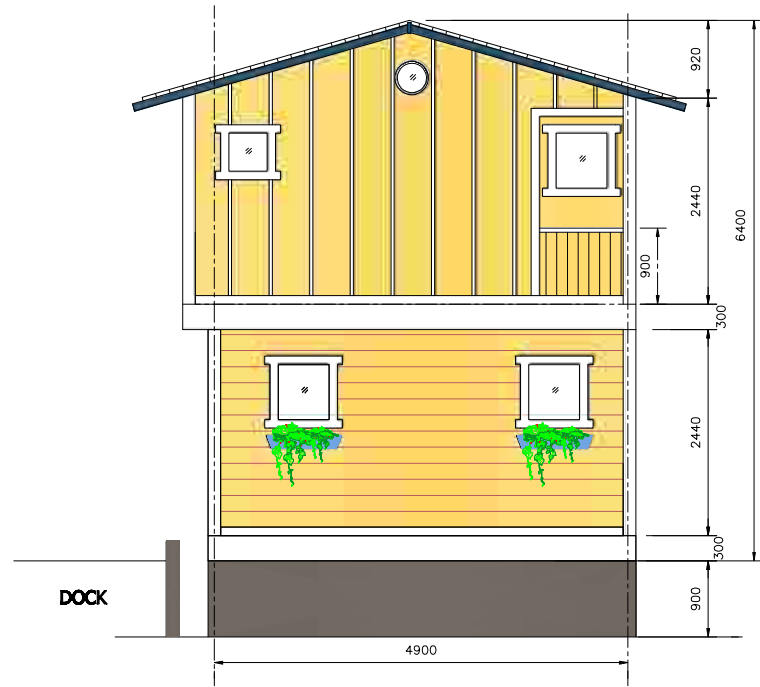
David Guy
A7-1 Dallas Road



EAST ELEVATION

SCALE 1 : 50

David Guy
A7-1 Dallas Road



WEST ELEVATION

SCALE 1 : 50







Timeline to Completion

- ✓ Receive FWCA support Nov 2021
- ❑ Receive JBNA support Dec 2021
- ❑ Finalize design details Jan 2022
- ❑ Receive GVHA and City approval Jan 2022
- ❑ Permit approvals process Jan-Mar 2022
- ❑ Building and construction Apr-Aug 2022
- ❑ NEW float homes in place Sep 2022