

Temporary Extended Sidewalks

Simcoe and Menzies Street

James Bay

Neighbourhood Association

Engineering & Public Works

October 13, 2021



Go Victoria: Our 2030 Vision

BY 2023...

All of Victoria's curb space is valued, managed and prioritized

Reach and maintain zero annual traffic fatalities and severe injuries



Reduce average vehicle kilometers travelled per household by 20% from 2017 levels

Clean, seamless mobility options for everyone

BY 2030...

- Systematically eliminate obstructions to create safer and more comfortable sidewalks on every street in our municipality
- Double transit ridership to, from and within Victoria are by walking, rolling or cycling
- 55% of all trips made to, from and within Victoria are by walking, rolling or cycling
- Renewable energy powers 30% of passenger vehicles and commercial vehicles operating in Victoria
- All Victoria neighbourhoods are "complete" by design, where residents can meet their daily needs within a 15-minute walk

BY 2025...

The City's traffic and smart mobility infrastructure provides real-time mobility safety and performance data to support evidence-based decisions

BY 2026...

95% of household transportation needs are fulfilled with less than 15% of their monthly income.

Reduce average vehicle ownership per household by 30% from 2017 levels



OUR MOBILITY VALUES

- Safety
- Liveability and Well-being
- Equity and Affordability
- Climate Action
- Accessibility and Connectivity



CURB MANAGEMENT

The City strives to adapt and regulate space to meet the diverse needs of our community. Curb use is never permanent or exclusive.

Public feedback is an important part of decision making.

D3

Functional priorities for curbside space assist in evaluating the trade-offs necessary to meet the city's broader community, mobility, and livability objectives

1. Sustainable Mobility

Sidewalks, cycle tracks, transit priority, bike parking, accessible parking



2. Access for People

Transit stops, passenger zones



3. Greening + Activation

Street trees, parklets, patios, planting



4. Delivery + Loading

local and commercial deliveries



5. Short-term + Shared Parking

Car share, metered, visitor, time-limited



6. On-street Parking

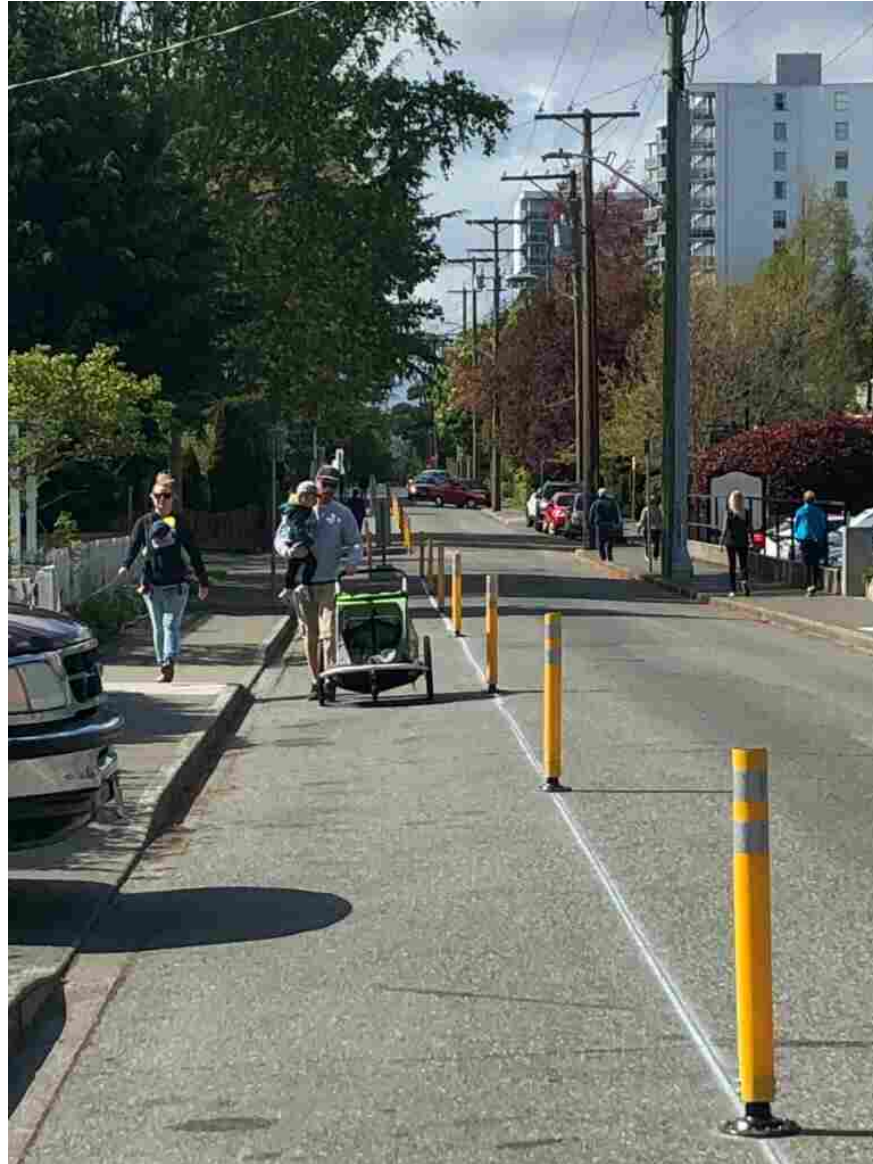
Regulated and unregulated



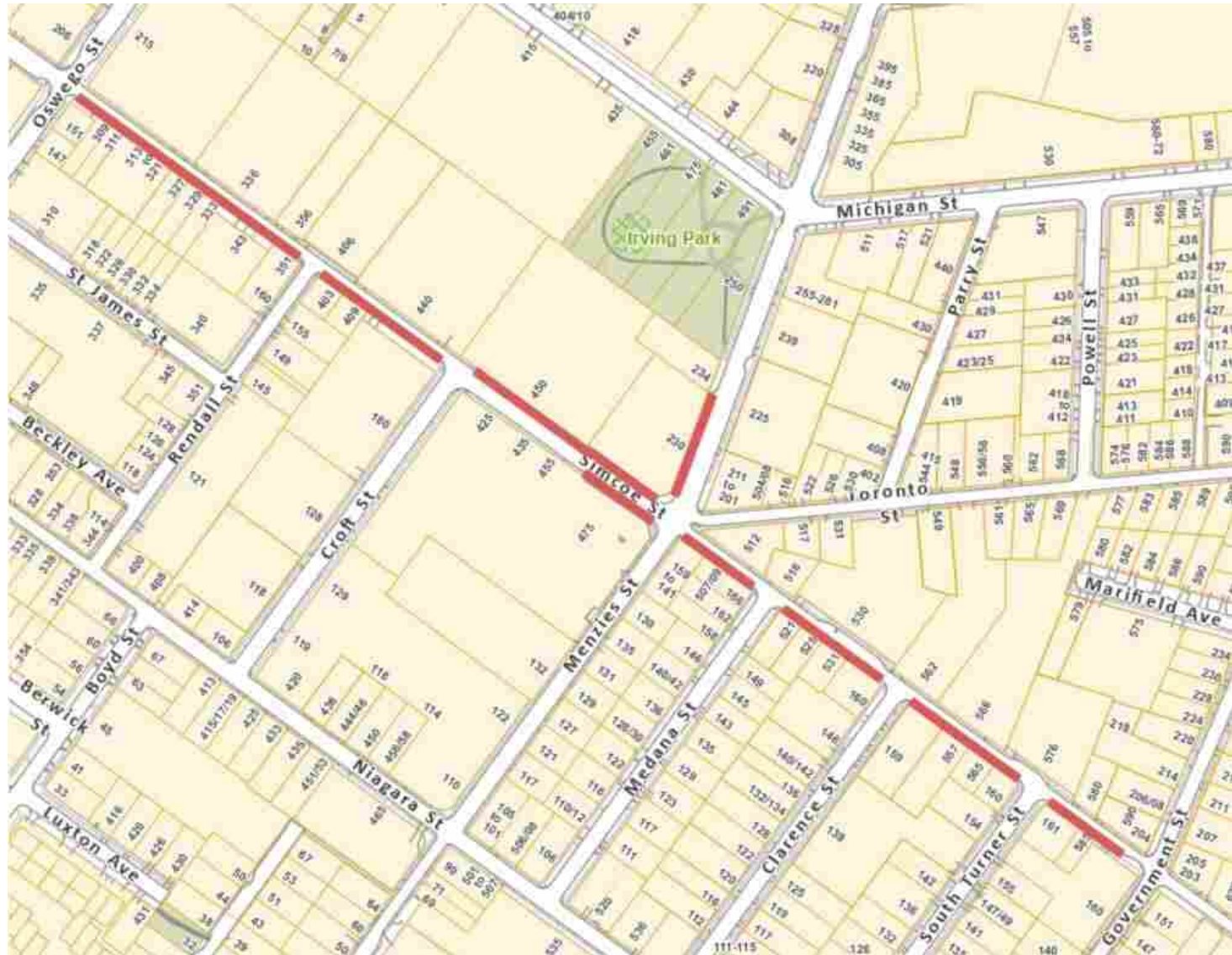
Pandemic Response Strategies

- Automatic traffic signals
- Enhanced bus shelter cleaning
- Road and lane closures for public and corporate use (eg: Broad Street)
- Build Back Victoria Program
 - Use of public space for private use (eg: Outdoor patios in parking spaces)
 - Allowance for off-street temporary variances (eg: Utilizing private car parks for outdoor seating)
- Temporary extended sidewalks
 - Quadra Hillside
 - **James Bay – SIMCOE AND MENZIES STREET**
 - Fairfield
 - Fernwood / North Park

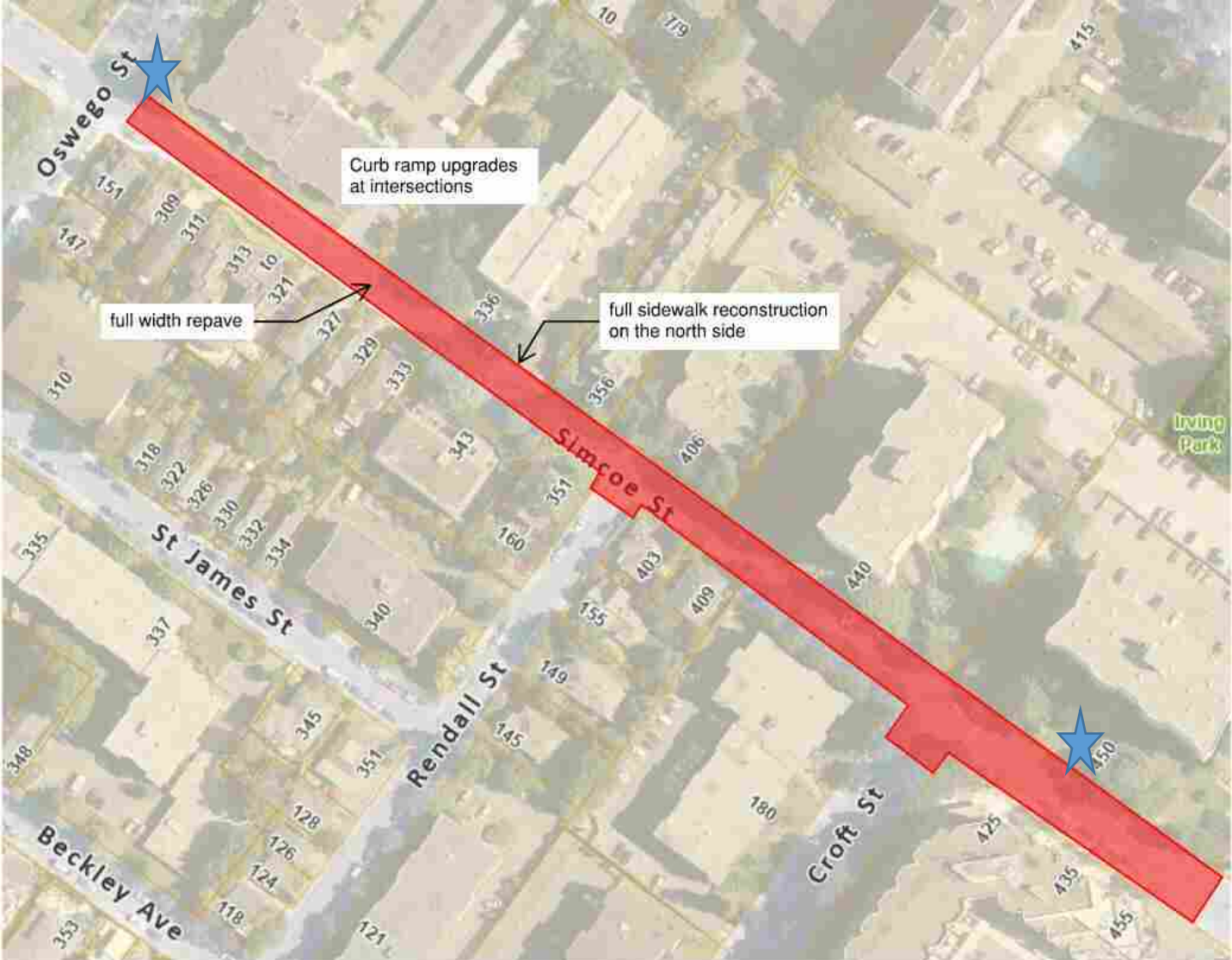
Temporary Extended Sidewalks (TES)



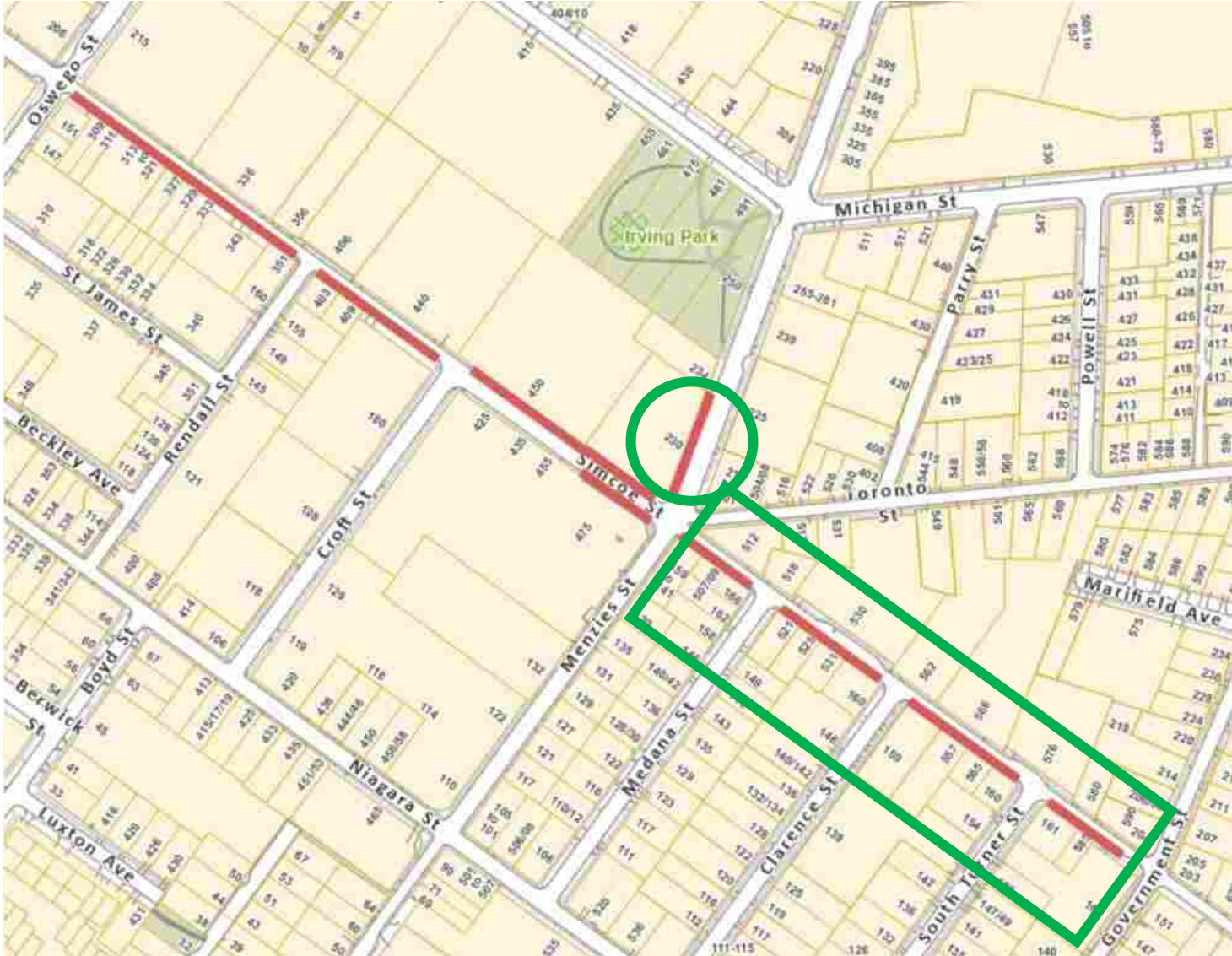
Current TES Locations



2021 Sidewalk Widening & Repaving



Focus of Today's Input



Menzies Street – Previous Curb Use



Simcoe Street – Previous Curb Use



Previous Curb Use Restrictions



Parking Restrictions

-  Metered
-  Time Limited Parking
-  Residential Parking Only
-  Residential Permit Parking
-  No Stopping
-  No Stopping 7-9am or 4-6pm
-  No Stopping 7am to 6pm
-  Unrestricted Parking

Ideas, Feedback & Suggestions

- **With the temporary extended sidewalks on Simcoe and Menzies Street....**
 - Was walking more pleasant?
 - Was rolling more accessible?
 - Was parking or loading more difficult?
 - What did you observe?
- **Provide us with your needs or interests for the future of this curb space**
 - Time limited parking
 - Residential parking only
 - Passenger loading
 - Commercial loading
 - Car share stalls
 - Bike parking corral
 - Public seating
 - Wider sidewalks

Ideas, Feedback & Suggestions

More to add?

[Email engage@victoria.ca](mailto:engage@victoria.ca)

Staff will be compiling feedback, observations, data and developing some options for consideration. We have several other sites around the City that are under consideration.