

# Peter Pollen Waterfront Park

Concept Design

*Opportunities and Big Ideas*



# Welcome

Opportunities and Big Ideas

Agenda

## Part 1 Presentation

- Project background information

## Part 2 Workshop

- Objectives for the new park space
- Discussion





# Part 1: Background

# Background

- James Bay peninsula is the **traditional territory of the Lekwungen People**
- 1850 – Indigenous burial grounds with mortuary poles still stood at Laurel Point
- 1870s - Jacob Sehl established his furniture factory at Laurel Point
- 1906-1970's - Site was home to a paint factory
- 1975 - Laurel Point Park Reservation By-Law was approved “to reserve certain lands in the Laurel Point area for park purposes”



# Remediation

Transport Canada partnered with the City of Victoria to remediate the contaminated soil on both City and federal property

- **Phase 1:** removal of contaminated underwater sediment in Victoria Harbour
- **Phase 2:** removal of contaminated soil at Laurel Point Park, backfilled the area with clean material and reinstate turf

Removing the contaminated soils helps prevent contaminants from entering the marine food web.



# Monitoring

**The remediation project is now complete.**

Transport Canada will transfer approximately two acres of federally owned land to the City of Victoria.

- a minimum one year-long post-remediation review
- environmental sampling of soil and groundwater



# City Initiatives

Current initiatives relevant to Laurel Point include:

- [Strategic Plan 2019-2022](#)
- [Parks and Open Space master Plan](#)
- [Urban Forest Master Plan](#)
- [Victoria Harbour Pathway Master Plan](#)
- [Downtown Public Realm Plan](#)
- [Harbour Vitality Principles](#)
- [Create Victoria](#)

Parks & Open Spaces Masterplan  
City of Victoria

April 2017



# Directions

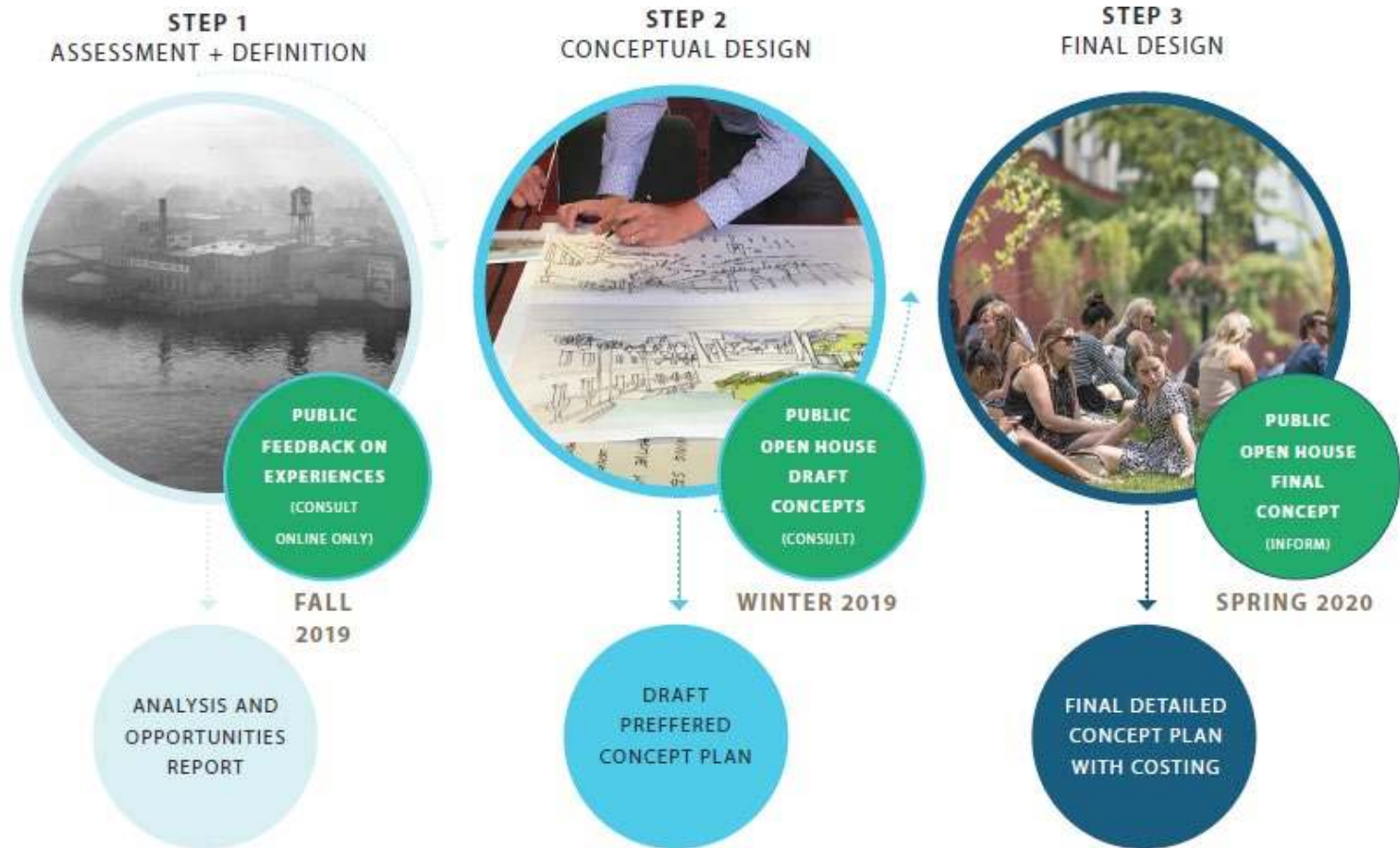
In 2019, **Council approved** funding for the Laurel Point Park Redevelopment project.

Key objectives:

- Creating a welcoming and inclusive space
- Acknowledging Indigenous connections to the land
- Supporting recreation and play
- Strengthening pedestrian connectivity within the site and to adjacent sites
- Supporting ecological health



# Process and Key Outcomes





**Key  
Objectives**

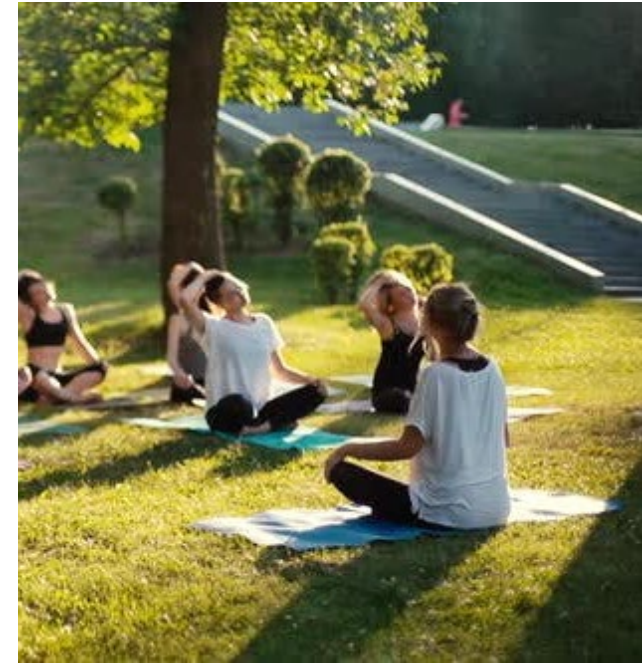
# Creating a welcoming and inclusive space



# Acknowledging Indigenous connections to the land



# Supporting recreation and play



# Strengthening pedestrian connectivity



# Supporting ecological health



Camas Bulbs



Camas Meadow



Garry Oak Ecosystem

# Supporting ecological health

Rhinoceros Audivets



- 49 birds
- 8 mammals
- 1 fish
- 2 molluscs
- 1 insect
- 34 plants

**95 Species**

Mottled Murrelet

Herring

Ring-billed Gull

# Green Shore Practices



1. Preserve the integrity or connectivity of shoreline processes
2. Maintain or enhance habitat diversity & function
3. Minimize or reduce pollutants to the environment
4. Reduce Cumulative impacts to the shoreline environment