

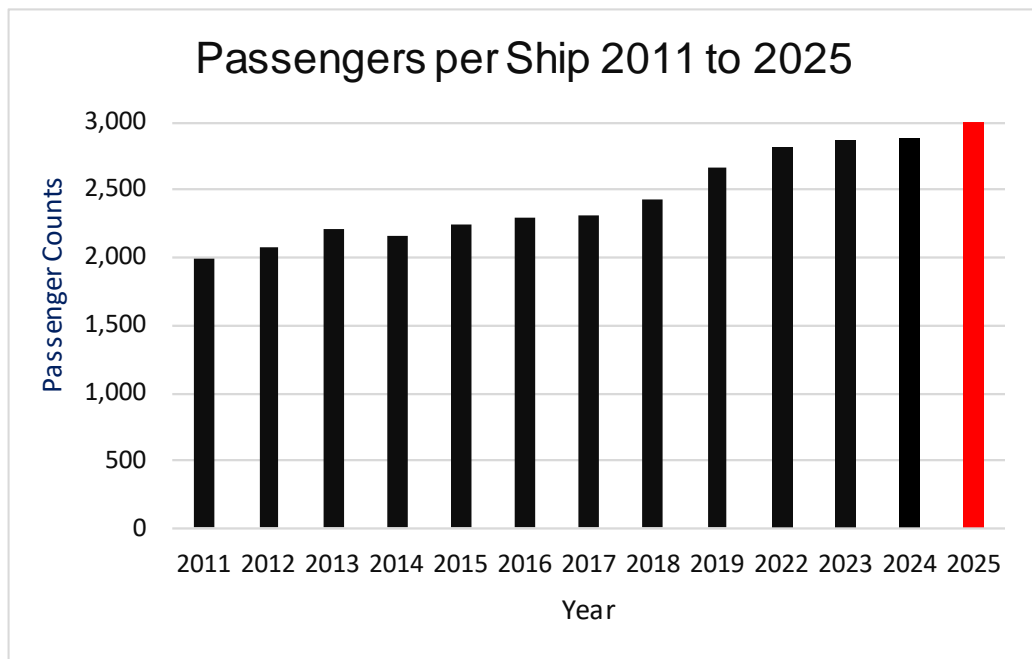
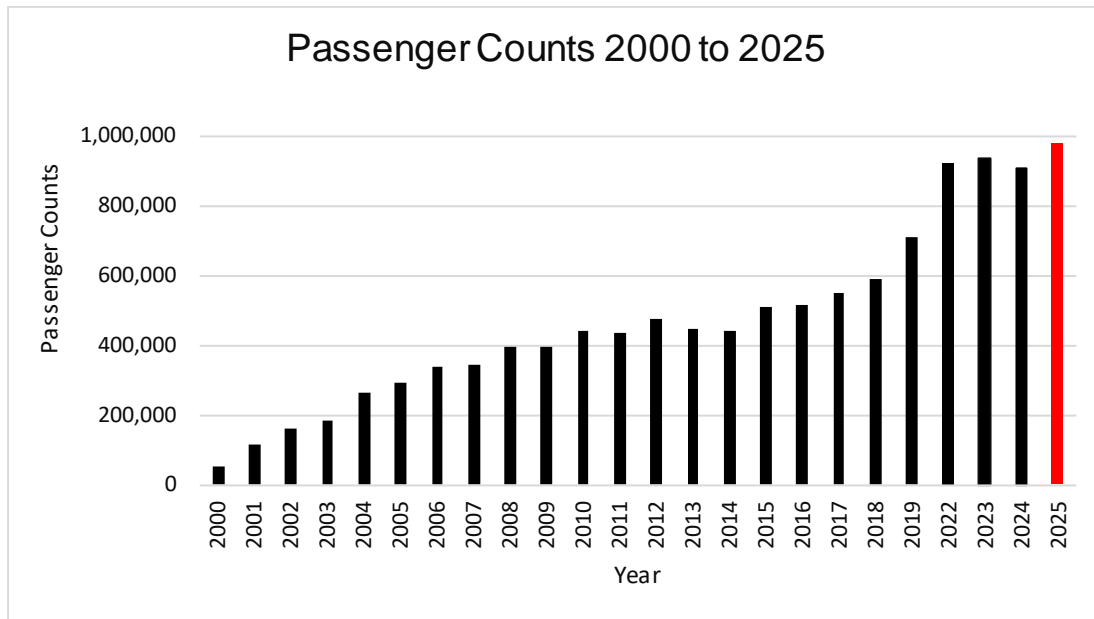
Ogden Point Cruise Ships Counts, 2025

The 2025 charts and tables within this report are derived from the [GVHA Schedule](#). (12th February 2025 version)

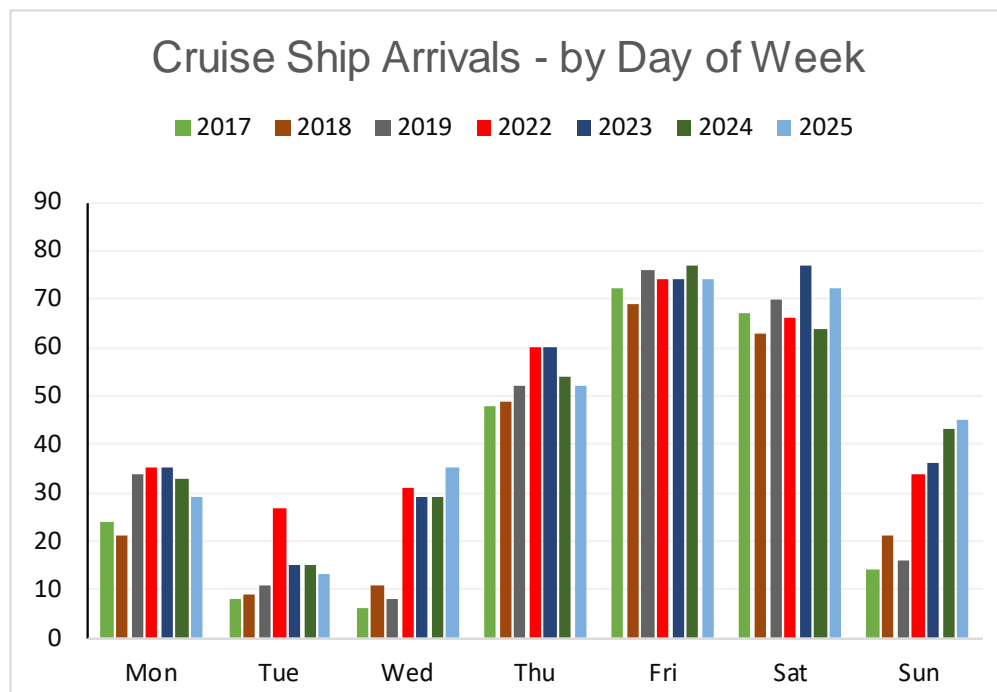
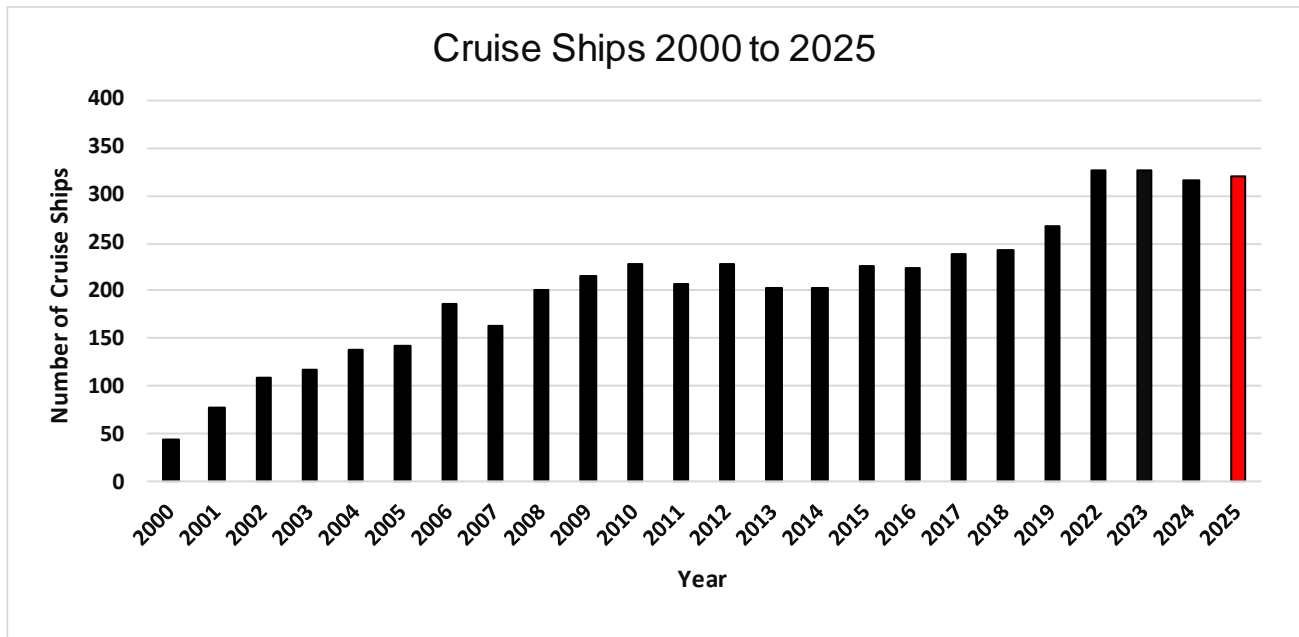
	Cruise Ship data 2011 to 2025												
	2011	2012	2013	2014	2015	2016	2017	2018	2019	2022	2023	2024	2025
Ships	208	229	203	204	227	225	239	243	267	327	326	315	320
Guest Capacity	414,388	476,916	449,668	442,044	507,842	516,660	551,938	592,166	713,894	922,497	935,479	909,194	980,734
Avg. Pax/Ship	1,992	2,083	2,215	2,167	2,237	2,296	2,309	2,437	2,674	2,821	2,870	2,886	3,065
Days in Port	104	108	96	102	112	113	116	119	125	163	161	160	159
Hours in Port	1,502	1,488	1,377	1,475	1,624	1,609	1,654	1,716	1,877	2,089	2,175	1,946	2,031
Pax hr in port	6.8	6.3	6.5	7.0	6.8	6.9	6.8	6.7	6.7	6.0	6.2	5.7	6.0

Passenger counts are based on the listed ship capacity. The actual passenger counts are usually higher. However, due to COVID the 2022 actual passenger counts were significantly lower at [715,000](#) (vs 922,497 capacity).

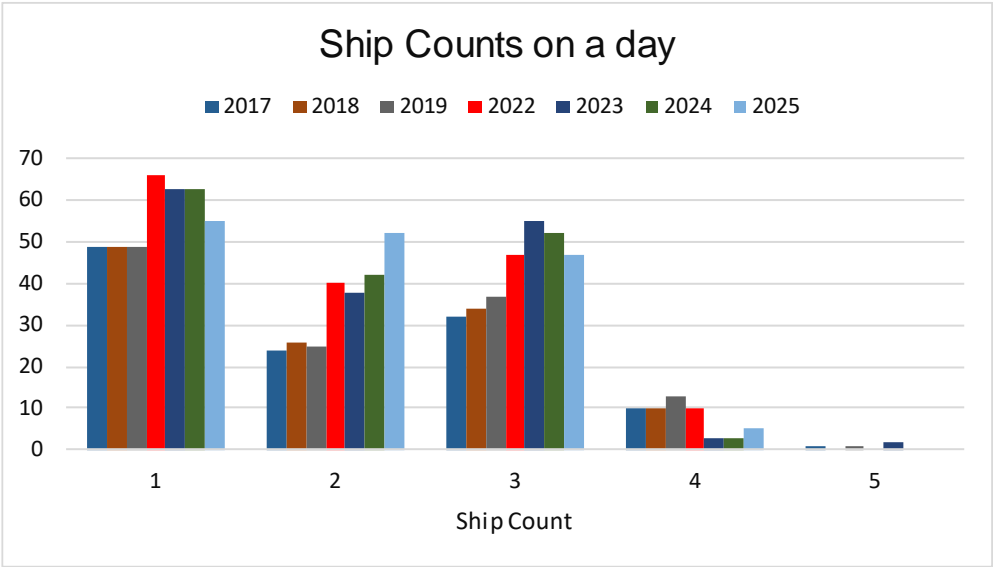
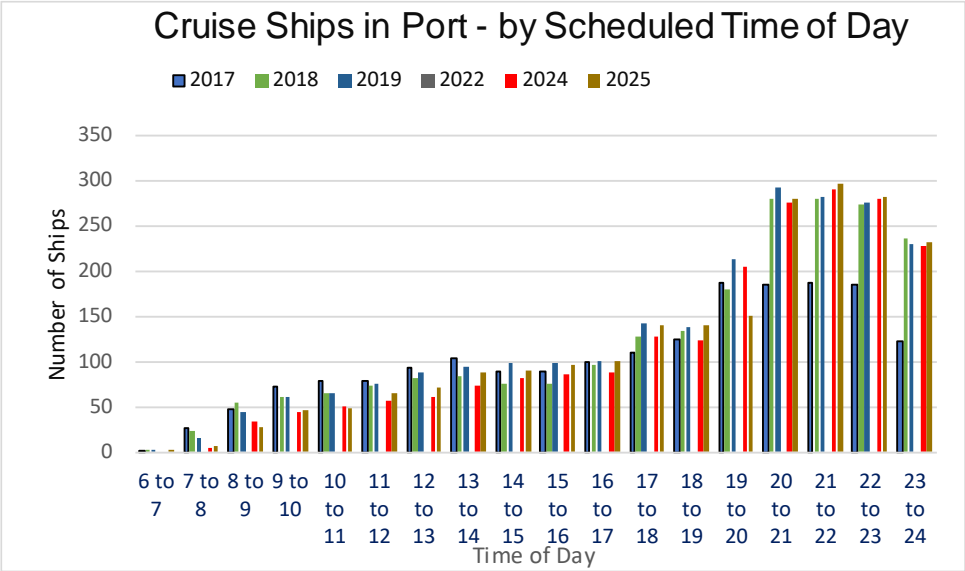
Ogden Point Cruise Ships Counts, 2025



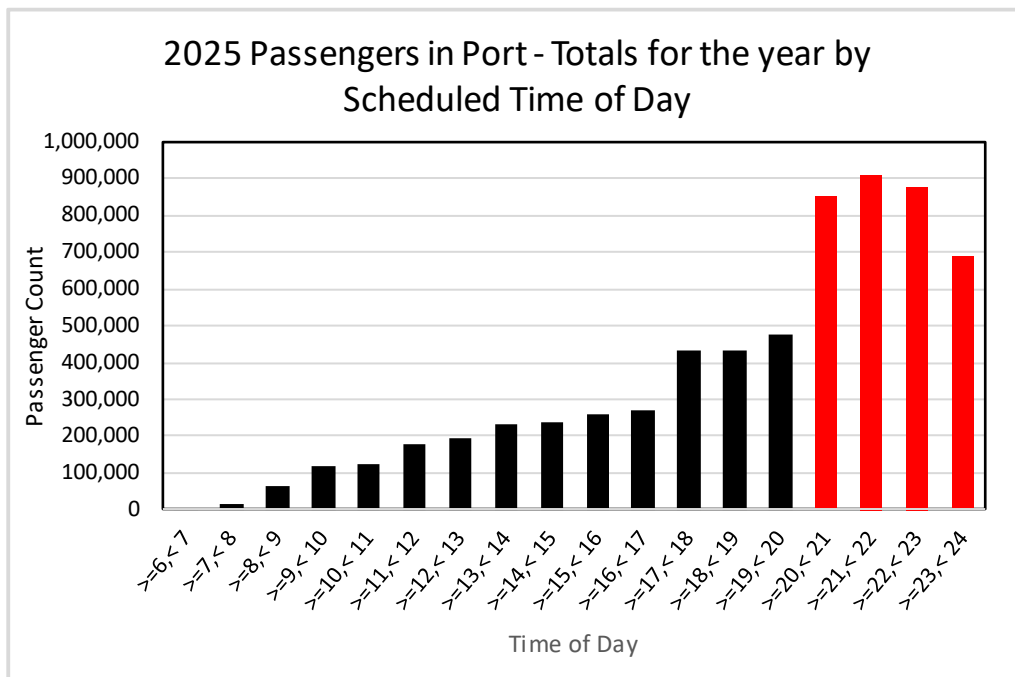
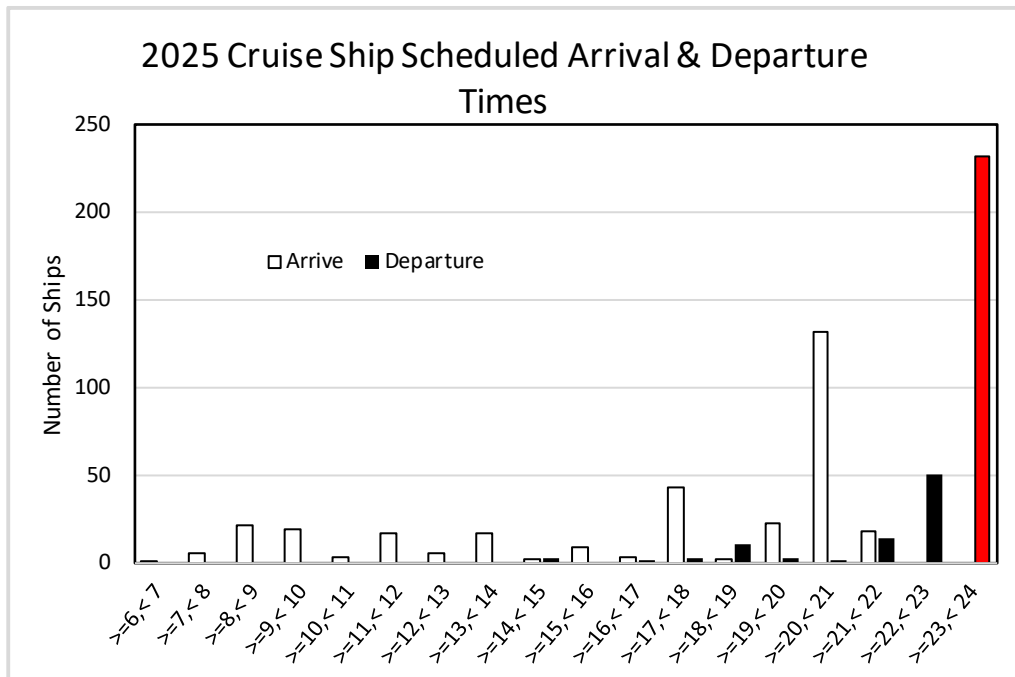
Ogden Point Cruise Ships Counts, 2025



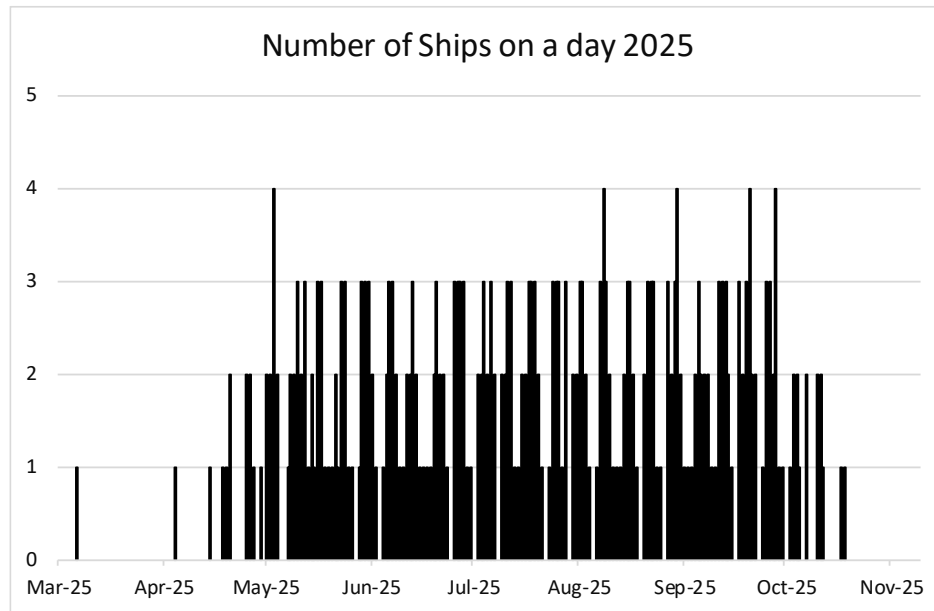
Ogden Point Cruise Ships Counts, 2025



Ogden Point Cruise Ships Counts, 2025



Ogden Point Cruise Ships Counts, 2025



2025 Number of days without cruise ships	
March	30
April	21
May	3
June	2
July	4
August	3
September	2
October	21

2025		
Time in Port	Count	%
>0h, <1h	0	0%
>=1h, <2h	0	0%
>=2h, <3h	18	6%
>=3h, <4h	132	41%
>=4h, <5h	23	7%
>=5h, <6h	29	9%
>=6h, <7h	18	6%
>=7h, <8h	12	4%
>=8h, <9h	10	3%
>=9h, <10h	9	3%
>=10h, <11h	29	9%
>=11h, <12h	5	2%
>=12h, <13h	13	4%
>=13h, <14h	3	1%
>=14h, <15h	9	3%
>=15h, <16h	9	3%
>=16h, <17h	0	0%
>=17h, <18h	1	0%
>18h	0	0%
	320	100%

Ogden Point Cruise Ships Counts, 2025

Percentage of departures occurring after 11pm and at midnight

	Visits		
	Total	Departure Time	
		>= 11pm	"11:59pm"
Carnival Cruise Lines	46	45	45
Celebrity Cruise Line	19	16	16
Cunard Line	12	0	0
Disney Cruise Line	2	0	0
Hapag Lloyd	1	0	0
Holland America Line	43	37	35
Lindblad Expeditions	6	6	0
Norwegian Cruise Line	74	73	60
Oceania Cruises	9	7	0
Princess Cruise Lines	59	47	44
Regent Seven Seas	4	1	0
Royal Caribbean Intl	44	0	0
Villa Vie Residences	1	0	0
	320	232	200
		73%	63%

Hours in Port

Ship Count	Hours	
	Together	Total
1	822	822
2	351	701
3	169	508
	1,342	2,031

i.e., there are 3 ships together in port for **169** hours; the total hours for all ships is **2031**

Ogden Point Cruise Ships Counts, 2025

Ships – Hours in Port

		Visits	Total Hours in Port	Average Hours in Port
ANTHEM OF THE SEAS	Royal Caribbean Intl	21	164	7.8
CARIBBEAN PRINCESS	Princess Cruise Lines	2	16	7.8
CARNIVAL LUMINOSA	Carnival Cruise Lines	20	80	4.0
CARNIVAL SPIRIT	Carnival Cruise Lines	26	109	4.2
CELEBRITY EDGE	Celebrity Cruise Line	17	113	6.6
CELEBRITY SUMMIT	Celebrity Cruise Line	2	18	8.8
CORAL PRINCESS	Princess Cruise Lines	3	29	9.7
DISCOVERY PRINCESS	Princess Cruise Lines	21	105	5.0
DISNEY WONDER	Disney Cruise Line	2	17	8.3
EURODAM	Holland America Line	23	94	4.1
EUROPA 2	Hapag Lloyd	1	6	6.0
GRAND PRINCESS	Princess Cruise Lines	3	38	12.5
KONINGS DAM	Holland America Line	2	27	13.5
MS Riviera	Oceania Cruises	9	94	10.4
NATIONAL GEOGRAPHIC QUENTIN	Lindblad Expeditions	2	30	15.0
NATIONAL GEOGRAPHIC VENTURA	Lindblad Expeditions	4	60	15.0
NIEUW AMSTERDAM	Holland America Line	2	14	7.0
NOORDAM	Holland America Line	1	10	10.0
NORWEGIAN BLISS	Norwegian Cruise Line	27	108	4.0
NORWEGIAN ENCORE	Norwegian Cruise Line	27	111	4.1
NORWEGIAN JADE	Norwegian Cruise Line	2	20	10.0
NORWEGIAN JOY	Norwegian Cruise Line	18	206	11.4
QUANTUM OF THE SEAS	Royal Caribbean Intl	21	111	5.3
QUEEN ELIZABETH	Cunard Line	12	126	10.5
RADIANCE OF THE SEAS	Royal Caribbean Intl	1	8	8.0
ROYAL PRINCESS	Princess Cruise Lines	20	70	3.5
RUBY PRINCESS	Princess Cruise Lines	9	91	10.1
SAPPHIRE PRINCESS	Princess Cruise Lines	1	10	10.0
SERENADE OF THE SEAS	Royal Caribbean Intl	1	10	9.5
SEVEN SEAS EXPLORER	Regent Seven Seas	3	34	11.3
SEVEN SEAS MARINER	Regent Seven Seas	1	17	17.0
VILLA VIE ODYSSEY	Villa Vie Residences	1	14	14.0
WESTERDAM	Holland America Line	15	75	5.0
		320	2031	6.3

Ogden Point Cruise Ships Counts, 2025

		Departure Time															
	2025	>=8am <9am	>=11am <Noon	>=noon <1pm	>=1pm <2pm	>=2pm <3pm	>=3pm <4pm	>=4pm <5pm	>=5pm <6pm	>=6pm <7pm	>=7pm <8pm	>=8pm <9pm	>=9pm <10pm	>=10pm <11pm	>=11pm <midnight	Totals	
Arrival Time	6am to 7am														1	1	
	7am to 8am					3		2								5	
	8am to 9am								3	7				2	9	21	
	9am to 10am									1	1		7	3	7	19	
	10am to 11am									2				1		3	
	11am to 12pm												3	9	5	17	
	12pm to 1pm									1	1			3	1	6	
	1pm to 2pm											1	3	2	11	17	
	2pm to 3pm													1	1	2	
	3pm to 4pm										1		1	3	4	9	
	4pm to 5pm														3	3	
	5pm to 6pm														27	16	43
	6pm to 7pm														2	2	
	7pm to 8pm														22	22	
	8pm to 9pm														132	132	
	9pm to 10pm														18	18	
10pm to 11pm															0		
11pm to midnight															0		
		0	0	0	0	3	0	2	3	11	3	1	14	51	232	320	

Ogden Point Cruise Ships Counts, 2025

Arrival Time	Ship Count	% of Total Visits	pax hours in Port
Morning Ships (>=6am , <Noon)	66	21%	11.2
Afternoon+ Ships (>=Noon, <7pm)	82	26%	6.6
Evening Ships (>=7pm, <midnight)	172	54%	4.0
	320		6.0

2025	Departure Time														Totals
	>=8am <9am	>=11am <Noon	>=noon <1pm	>=1pm <2pm	>=2pm <3pm	>=3pm <4pm	>=4pm <5pm	>=5pm <6pm	>=6pm <7pm	>=7pm <8pm	>=8pm <9pm	>=9pm <10pm	>=10pm <11pm	>=11pm <midnight	
Monday					1						1		3	24	29
Tuesday					1				1				4	7	13
Wednesday												8		27	35
Thursday								2	7			1	18	24	52
Friday					1					1		1	2	69	74
Saturday							1	1	2	2			2	64	72
Sunday							1		1			4	22	17	45
	0	0	0	0	3	0	2	3	11	3	1	14	51	232	320

Ogden Point Cruise Ships Counts, 2025

Ship “TO” and “FROM” Ports

2025	From	To
Alert Bay, BC	1	3
Astoria	6	2
Friday Harbour		1
Glacier Bay	6	
Haines	2	
Honolulu	1	
Icy Point	2	
Icy Strait	9	
Juneau	29	
Ketchikan	167	
Los Angeles		2
Nanaimo	1	1
San Diego	1	2
San Francisco	7	10
Seattle	9	275
Sitka	23	
Skagway	45	
Gulf Islands		2
TBA	1	1
Vancouver	9	21
Wrangell	1	
	320	320

Ogden Point Cruise Ships Counts, 2025

	2025	Ship Counts by Month								Totals
		Mar	Apr	May	Jun	Jul	Aug	Sep	Oct	
"Coming From" Port	Alert Bay, BC							1		1
	Astoria		3	3						6
	Glacier Bay			2		1		3		6
	Haines					1	1			2
	Honolulu		1							1
	Icy Point						1	1		2
	Icy Strait			2	2	2	2	1		9
	Juneau			3	7	7	7	5		29
	Ketchikan		6	32	27	31	36	26	9	167
	Nanaimo								1	1
	San Diego			1						1
	San Francisco			5					2	7
	Seattle		2	1	1			3	2	9
	Sitka			2	3	4	5	8	1	23
	Skagway			5	10	13	11	6		45
	TBA				1					1
	Vancouver	1			2	1		5		9
	Wrangell			1						1
	Totals	1	12	57	53	60	63	59	15	320

	2025	Ship Counts by Month								Totals
		Mar	Apr	May	Jun	Jul	Aug	Sep	Oct	
"Going To" Port	Alert Bay, BC							1	2	3
	Astoria							2		2
	Friday Harbour							1		1
	Gulf Islands		1	1						2
	Los Angeles							2		2
	Nanaimo		1							1
	San Diego	1						1		2
	San Francisco			1	1	3	2	3		10
	Seattle		7	44	49	56	61	47	11	275
	TBA				1					1
	Vancouver		3	11	2	1		2	2	21
	Totals	1	12	57	53	60	63	59	15	320

Ogden Point Cruise Ships Counts, 2025

		COMING FROM																		
		Alert Bay, BC	Astoria	Glacier Bay	Haines	Honolulu	Icy Point	Icy Strait	Juneau	Ketchikan	Nanaimo	San Diego	San Francisco	Seattle	Sitka	Skagway	TBA	Vancouver	Wrangell	Totals
GOING TO	Alert Bay, BC													3						3
	Astoria																	2		2
	Friday Harbour	1																		1
	Gulf Islands												2							2
	Los Angeles									1			1							2
	Nanaimo		1																	1
	San Diego																	2		2
	San Francisco			3	2									1	1	1		2		10
	Seattle			2		1	2	9	29	163	1				21	44		3		275
	TBA																1			1
	Vancouver		5	1						3		1	7	2	1				1	21
		1	6	6	2	1	2	9	29	167	1	1	7	9	23	45	1	9	1	320

Ogden Point Cruise Ships Counts, 2025

Ship "Arriving From" ports with visit counts.

		Ship Count for Arriving From Port																			
2025	Passengers (Normal Capacity)	Alert Bay, BC	Astoria	Glacier Bay	Haines	Honolulu	Icy Point	Icy Strait	Juneau	Ketchikan	Nanaimo	San Diego	San Francisco	Seattle	Sitka	Skagway	TBA	Vancouver	Wrangell	Total Visits	Total Passengers @ 100% capacity
ANTHEM OF THE SEAS	4,919								9						6	6				21	103,299
CARIBBEAN PRINCESS	3,140			1									1							2	6,280
CARNIVAL LUMINOSA	2,260									20										20	45,200
CARNIVAL SPIRIT	2,124									25							1			26	55,224
CELEBRITY EDGE	2,918															16		1		17	49,606
CELEBRITY SUMMIT	2,218		1															1		2	4,436
CORAL PRINCESS	1,970		1										1	1						3	5,910
DISCOVERY PRINCESS	3,660															21				21	76,860
DISNEY WONDER	2,400														1			1		2	4,800
EURODAM	2,104									22			1							23	48,392
EUROPA 2	516		1																	1	516
GRAND PRINCESS	2,606		1							1									1	3	7,818
KONINGS DAM	2,650		1											1						2	5,300
MS Riviera	1,250														7			2		9	11,250
NATIONAL GEOGRAPHIC QUENTIN	100	1												1						2	200
NATIONAL GEOGRAPHIC VENTURA	100													4						4	400
NIEUW AMSTERDAM	2,106											1						1		2	4,212
NOORDAM	1,918										1									1	1,918
NORWEGIAN BLISS	4,250									27										27	114,750
NORWEGIAN ENCORE	3,998									27										27	107,946
NORWEGIAN JADE	2,882														2					2	5,764
NORWEGIAN JOY	3,883			2				9		6				1						18	69,894
QUANTUM OF THE SEAS	4,180								20	1										21	87,780
QUEEN ELIZABETH	2,081						2			3					6	1				12	24,972
RADIANCE OF THE SEAS	2,500												1							1	2,500
ROYAL PRINCESS	3,560									18			1					1		20	71,200
RUBY PRINCESS	3,080			3	2								1		1	1		1		9	27,720
SAPPHIRE PRINCESS	2,600		1																	1	2,600
SERENADE OF THE SEAS	2,500												1							1	2,500
SEVEN SEAS EXPLORER	754									3										3	2,262
SEVEN SEAS MARINER	700																	1		1	700
VILLA VIE ODYSSEY	925													1						1	925
WESTERDAM	1,840					1				14										15	27,600
		1	6	6	2	1	2	9	29	167	1	1	7	9	23	45	1	9	1	320	980,734

Ogden Point Cruise Ships Counts, 2025

Cruise Ship Greenhouse Gas Emissions

What is the Green House Gas (GHG) emission rate when three cruise ships are in port and how does it compare with the City of Victoria GHG estimate for **2025**?

Summary

The report contains 4 sections:

- An estimate of the **2025** cruise ship GHG emissions.
- An estimate of the **2025** City of Victoria GHG emissions.
- An estimate of the **2025** cruise ship hours in port for the 1, 2 & 3 ship combinations.
- A comparison of both the cruise ship and City hourly and annual emission rates.

The conclusion is that when three ships are in port the estimated hourly GHG emission rate (tCO₂e/h) is likely **47%** and possibly over **61%** of the City of Victoria's average hourly rate.

1) Green House Gas (GHG)– Estimating the **2025** cruise ship emissions (measured in tCO₂e)

The following analysis uses two sources to estimate the total **2025** cruise ship GHG emissions:

- a) [2019 GHVA Emissions Inventory](#) – includes 2018 GHG data.
- b) [The 2019 Capital Daily Report](#)

In both cases the **2025** estimate is obtained by prorating the hours the ships were in port to the currently scheduled **2025** cruise ship hours.

1a) GVHA Emissions Inventory

The GHVHA report estimates the total cruise ship GHG for 2018 while docked at Ogden Point at 8,252 tonnes.

Prorating this amount by the ratio of **2031** hours to 2018 hours gives a **2025** estimate of **9,765** tonnes.

	Hours in Port	tCO ₂ e
		GVHA from report
2018	1,716	8,252
2025	JBNA estimate	Prorate based on hours
	2,031	9,765
tCO ₂ e/h		4.8

Ogden Point Cruise Ships Counts, 2025

1b) Capital Daily

The Capital Daily report estimates the total cruise ship GHG for 2019 while docked at Ogden Point at 11,406 tonnes.

Prorating this amount by the ratio of **2025** hours to 2019 hours gives a **2025** estimate of **12,764** tonnes

	Hours in Port	tCO ₂ e
	Capital Daily	
	from report	
2019	1,847	11,406
2025	JBNA estimate	Prorate based on hours
	2,031	12,540
tCO ₂ e/h		6.2

2) Estimate of the total City of Victoria CHG emissions for **2025**

The City's [2022 Climate Leadership Plan Progress Report Update](#) provides a figure of 314,000 tCO₂e for 2020 and notes this to be a 24% reduction from the 2007 level. From these figures the 2030 target of 50% the 2007 level is calculated at 207,000 tCO₂e

From these figures an estimate for **2025** is **266,903** tCO₂e (=30.5 tCO₂e/h)

	tCO ₂ e	tCO ₂ e/h
	From City Reports	
2021	314,826	36
2030	207,000	24
2025	interpolate between years	
	266,903	30.5

Ogden Point Cruise Ships Counts, 2025

3) Cruise ship hours in port

			Based on prorated 2019 Capital Daily GHG		Based on prorated 2018 GVHA GHG	
Ships in Port at the same time	Total "ship" hours	Total "together in port" hours	tCO2e	tCO2e/h	tCO2e	tCO2e/h
1	822	822	5,075	6.2	3,952	4.8
2	701	351	4,330	12.4	3,372	9.6
3	508	169	3,135	18.5	2,441	14.4
	2,031	1,342	12,540	9.3	9,765	7.3

The table above is based on the above and an analysis of the GVHA cruise ship schedule.

4a) Comparison of the 2025 tCO2e hourly rates for "3 ships in Port" and "Total City of Victoria"

	Capital Daily	GVHA
	tCO2e/h	
City of Victoria	30.5	30.5
3 Ships in Port	18.5	14.4
%	61%	47%

We therefore have two estimates for the Cruise Ship hourly GHG emission rate when 3 ships are in port:

- 47% of the City of Victoria emission rate based on the GHHA report.
- 61% of the City of Victoria emission rate based on the Capital Daily report.

Ogden Point Cruise Ships Counts, 2025

4b) Comparison of the total **2025** tCO₂e emissions for the Ogden Point Cruise Ships and the City of Victoria

2025 tCO ₂ e	
City of Victoria	
266,903	
Capital Daily	GVHA
12,540	9,765
4.7%	3.7%

We therefore have two estimates for the Cruise Ship total **2025** GHG emissions:

- **3.7%** of the City of Victoria emissions based on the GHHA report.
- **4.7%** of the City of Victoria emissions based on the Capital Daily report.